



8000 Series

Escutcheons and Accessories



Modern design combined with functionality are the hallmark of the Legge 8000 Series, with a refined square rose and a wide selection of designer levers to choose from.

The Legge 8000 Series will enhance the standard and elegance of any residential and commercial applications like apartments, office fitouts, hotels, and highend quality homes.

Features

- Constructed of quality components, with forged brass levers and inner roses, and pressed zinc rose caps
- The 10 year warranty provides specifiers and users with assured quality and performance
- Suitable for use on fire door assemblies when used with fire rated locks and latches



Warranties	
Mechanical	10 years

Specification guide

Function	Finish
Turn 8007	Antique bronze A
Cylinder escutcheon 8008	Chrome plate C
Emergency release 8009	Oil rubbed bronze ORB
Euro profile cylinder 8012	Polished brass P
Indicating turn 8013	Polished brass unlacquered PU
Indicating emergency release 8014	Satin chrome plate S
Accessible turn 8054	Satin black chrome SBC
Indicating accessible turn 8054IND	Satin brass SB
	Satin brass unlacquered SBU

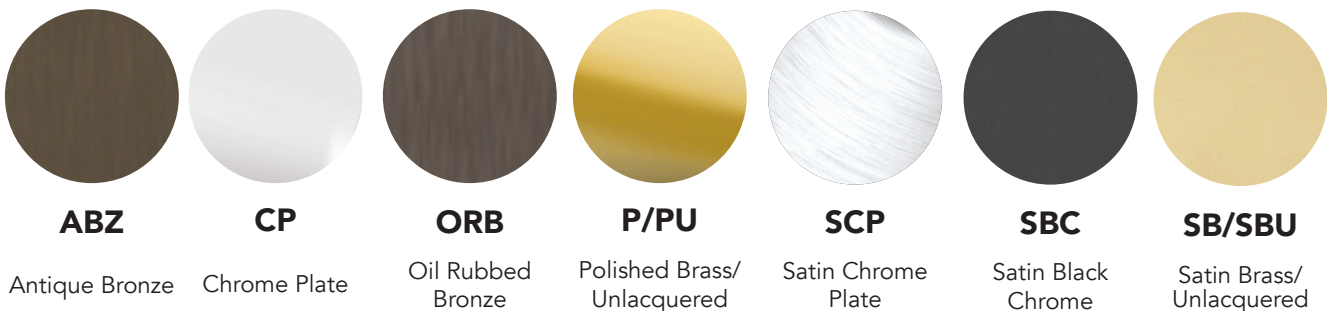
1. Function

Select the desired function e.g. Turn 8007

2. Finish

Select the desired finish e.g. Satin chrome plate 8007S

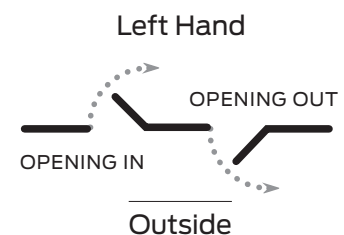
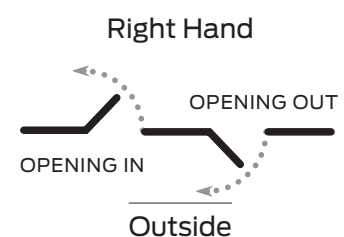
Finishes



Specifications

Door type	Timber or metal
Door thickness	Latch furniture 32mm to 50mm Passage set 32mm to 50mm Privacy set 32mm to 42mm
Compatible locks/latches	Schlage ME Series mortice locks Legge 990MF Series mortice locks Legge Privacy Bolt
Fixing	Bolt-through concealed fixing. Screw length 75mm
Materials	Forged brass levers and inner roses, zinc die cast rose caps

Handing guide



Testing and Compliance



Fire Rating:

Successfully tested on fire door assemblies in accordance with AS1905 Part1: Fire resistance doorsets. Check with fire door manufacturer prior to installation.



Accessibility:

Compliant to the AS 1428:1-2009 Design for Access and Mobility

Caution:

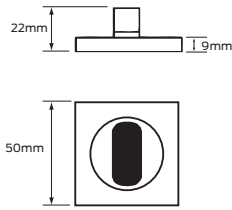
When door closers are installed and adjusted to meet reduced opening force requirements, there may be insufficient power to reliably close and latch the door, depending on prevailing operating conditions.

Note:

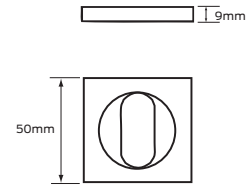
In areas of high wind pressure and/or air conditioning pressures, the LCN Automatic Door Operators are recommended.

Legge 8000 Series escutcheons and spare parts

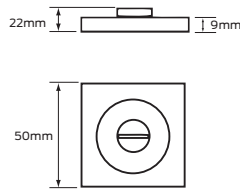
Turn #8007



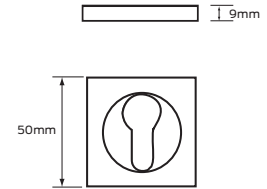
Cylinder #8008



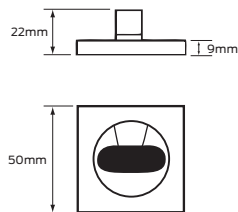
Emergency release #8009



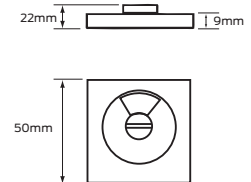
Euro profile cylinder #8012



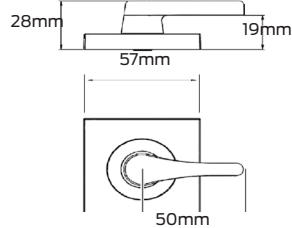
Indicating turn #8013



Indicating emergency release #8014

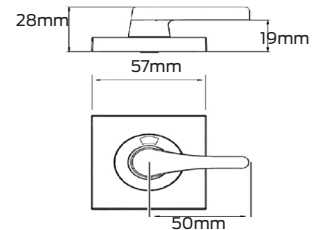


Accessible turn #8054



Depicted in RH

Indicating accessible turn #8054IND



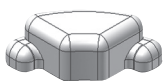
Depicted in RH



Denotes handed lever/turn

Dummy trim fixing kit

Allows conversion of latch furniture to dummy trim function. One kit required per handle



Square outer rose option passage

#Z800102



Add this cap with the preferred Legge 6000 Series lever as a square rose option for passage or latch furniture functions (excludes privacy option and two units required for a furniture set).

Square outer rose option privacy

#Z800202



Add this cap with the preferred Legge 6000 Series lever as a square rose option for privacy furniture functions (not suitable for passage or latch furniture and two units required for a furniture set).