

Detention Series Square Plate Furniture



A heavy duty plate designed for use in hospitals and detention facilities. Styled for institutional use, this plate has six fixing points to ensure that it is well secured to the door. Plates are designed to be free of ligature points.

Application

Designed for use with Lockwood Selector 3770 and Synergy 3570 Series Mortice Locks as well as Lockwood 3579 Secure Area Rated Locks.

Features and Specifications

- Anti-ligature - Knob 21 & 22
- Covers fixing holes from existing Artefact 200 Series Furniture
- Detention furniture turns feature a clutching mechanism that allows the cylinder to retract the bolt even if the turnknob is held from the inside

Product Details

Dimensions	162mm x 180mm x 2mm: base plate 161mm x 75mm x 3mm: bevelled top plate
Door Thickness*	35mm minimum, 45mm maximum
Finishes	Satin Stainless Steel (SS)
Fixing	Six fixing points 220D series plates have concealed fixings 221D series plates have visible fixings
Handing	All plates are handed except 220D07, 220D24 and 220D31, which are non-handed when ordered without engraving.
Materials	Stainless steel

***Note:** A minimum door thickness of 50mm is required to fit flush pulls back to back.

Standards and Compliance

Fire Rated
Lockwood Detention Series Plate furniture have been successfully tested up to 2 hours with a fire rated Lockwood mortice lock on fire door assemblies (depending on type of doorset) in accordance with Australian Standard AS1905.1:2005, Fire Resistant Doorsets.



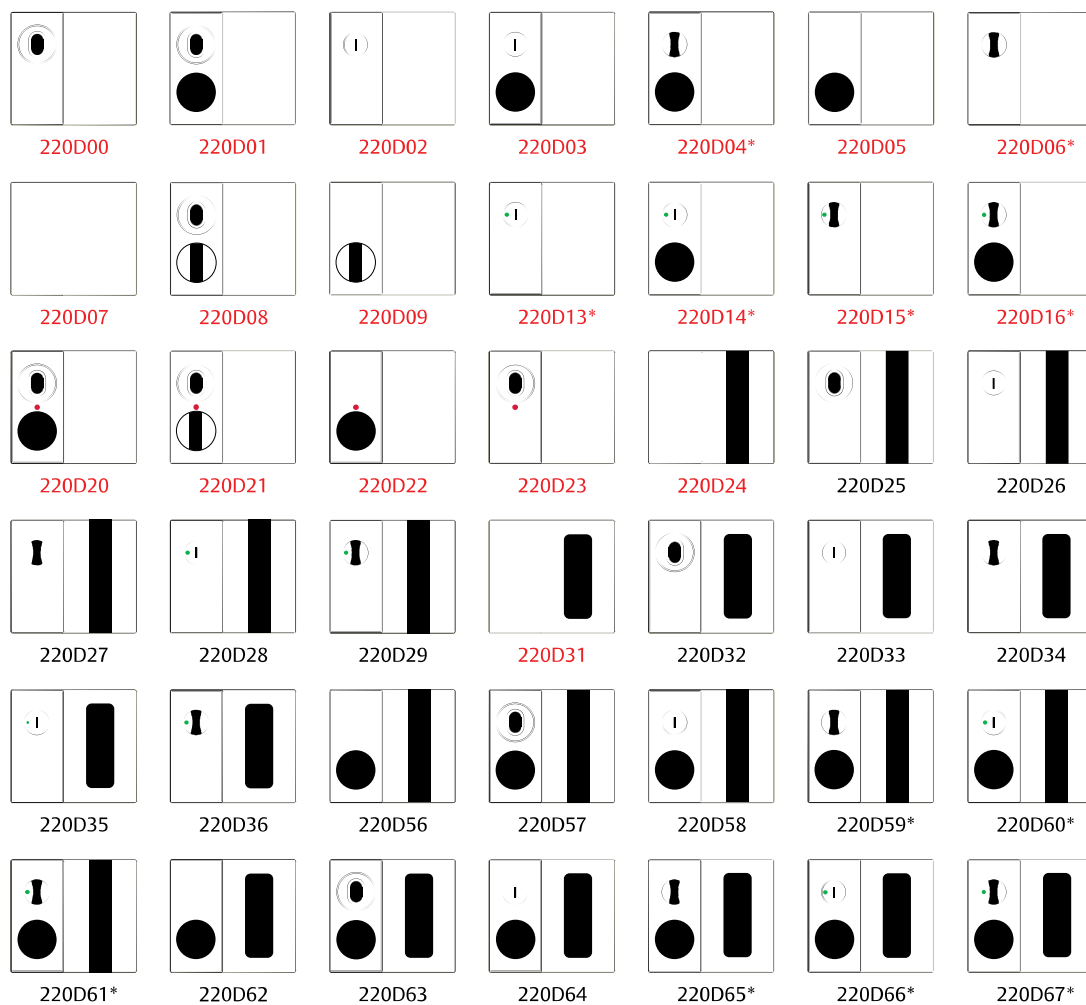
S3 High security for maximum protection (AS4145.2:1993).

D3 High durability for maximum frequency usage.



Anti-Corrosion

Detention Series Square Plate Lever/Knobs and Functions



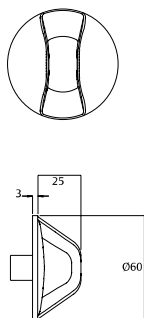
Legend:	Cylinder Hole	Lever/Knob	Fixed Lever/Knob	Turnknob	Emergency Turn
	Privacy Indicating Turnknob	Privacy Indicating Emergency Turn	LED	Pull Handle	Flush Pull

Cylinder guards must be ordered separately. Only the plate functions shown above in red are available with engraving.

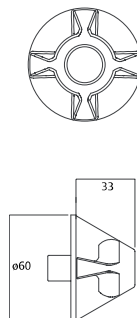
* Refer to ordering procedure for part number when ordering with 3770 Series

Lever and Knob Selection

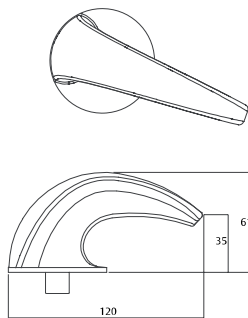
Standard Knob 21



Webbed Knob 22



Lever 23



Detention Series Rectangular Plate Furniture



This smaller plate range has been designed for use in detention facilities such as hospitals where domestic aesthetics are preferred over institutional type styling. Plates are designed to be free of ligature points.

Application

Designed for use with Lockwood Selector 3770 and Synergy 3570 Series Mortice Locks as well as Lockwood 3579 Secure Area Rated Locks.

Features and Specifications

- Anti-ligature - Knob 21 & 22
- Covers fixing holes from existing 212 Series Artefact Plates
- Detention furniture turns feature a clutching mechanism that allows the cylinder to retract the bolt even if the turnknob is held from the inside

Product Details

Dimensions	162mm x 76mm x 2mm: base plate 161mm x 75mm x 3mm: bevelled top plate
Door Thickness	35mm minimum, 45mm maximum
Finishes	Satin Stainless Steel (SS)
Fixing	Four fixing points 222D series plates have concealed fixings 223D series plates have visible fixings
Handing	Only plates with 23 Lever and / or turnknobs are handed
Materials	Stainless steel

Standards and Compliance



Fire Rated
Lockwood Detention Series Plate furniture have been successfully tested up to 2 hours with a fire rated Lockwood mortice lock on fire door assemblies (depending on type of doorset) in accordance with Australian Standard AS1905.1:2005, Fire Resistant Doorsets.

S3

High security for maximum protection (AS4145.2:1993).

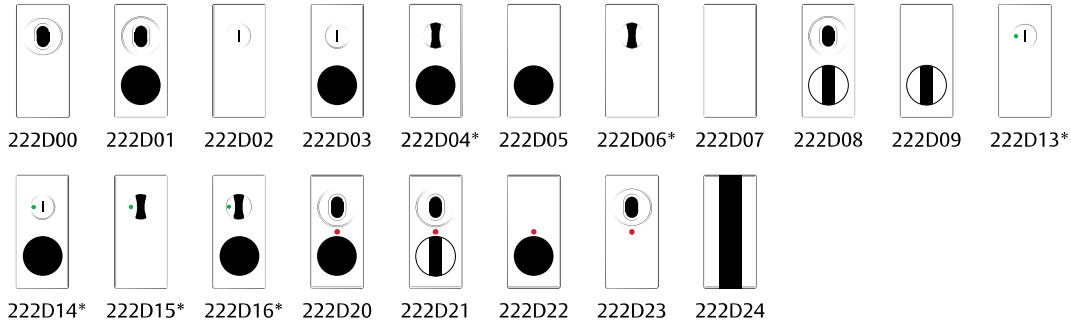
D3

High durability for maximum frequency usage.



Anti-Corrosion

Detention Series Rectangular Plate Lever/Knobs & Functions

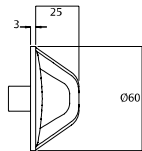
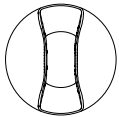


Legend:	Cylinder Hole	Lever/Knob	Fixed Lever/Knob	Turnknob	Emergency Turn
	Privacy Indicating Turnknob	Privacy Indicating Emergency Turn	LED	Pull Handle	

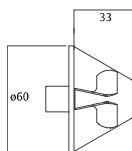
* Refer to ordering procedure for part number when ordering with 3770 Series

Lever and Knob Selection

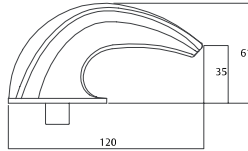
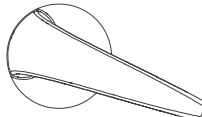
Standard Knob 21



Webbed Knob 22



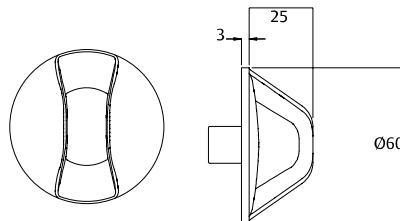
Lever 23



Detention Series – Knobs and Levers

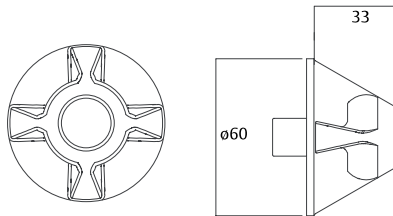
Standard Knob 21

Simple yet functional, this knob has soft edges to minimise impact injuries and anti-ligature features that make it suitable for use in detention facilities.



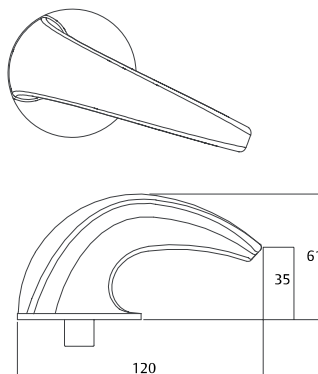
Webbed Knob 22

The webbed knob combines pleasing aesthetics, comfortable grip and anti-ligature features to provide a solution for any environment.



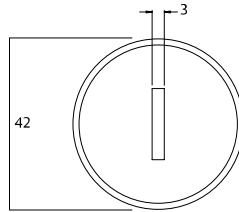
Lever 23

Ergonomically designed to maximise grip, the detention lever is suitable for use in hospitals and minimum security applications. It caters especially for the elderly or people with arthritic conditions.

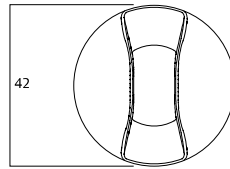


Detention Series – Turns

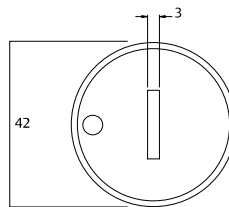
Emergency Turn



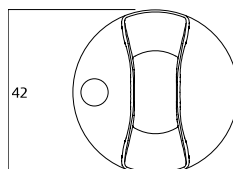
Turnknob



Privacy Indicating
Emergency Turn



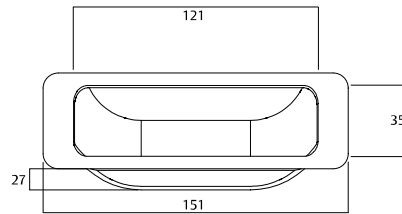
Privacy Indicating Turnknob



Detention Series – Pulls

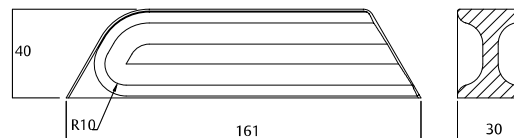
Flush Pull

The detention flush pull has been designed to maximise grip and eliminate the possibility of hiding objects in the cavity.



Standard Pull

The detention pull allows for a firm grip and can be used to open heavy doors. Also designed to be free of hanging points.



Detention Series – Accessories

Cylinder Guards

Part Number	Door Thickness Suitability
-------------	----------------------------

220D00/40SS	Suit doors 35-40mm
-------------	--------------------

220D00/45SS	Suit doors 40-45mm
-------------	--------------------

220D00/50SS	Suit doors 45-50mm
-------------	--------------------

220D00/55SS	Suit doors 50-55mm
-------------	--------------------

220D00/60SS	Suit doors 55-60mm
-------------	--------------------



Cylinder guards must be fitted with any cylinder plate function. Guards are available to suit different door thicknesses.

Fixing Screws

Part Number	Description	Door Thickness Suitability
-------------	-------------	----------------------------

220D11/45	Torx Anti-tamper Screws	35 - 45mm
-----------	-------------------------	-----------

220D11/55	Torx Anti-tamper Screws	45 - 55mm
-----------	-------------------------	-----------

220D11/65	Torx Anti-tamper Screws	55 - 65mm
-----------	-------------------------	-----------

220D12/45	Standard Screws	35 - 45mm
-----------	-----------------	-----------

220D12/55	Standard Screws	45 - 55mm
-----------	-----------------	-----------

220D12/65	Standard Screws	55 - 65mm
-----------	-----------------	-----------

Torx anti-tamper, snake-eye and standard screws are available in accessory packs to suit different door thicknesses. Only standard screws to suit doors 35mm – 45mm thick are supplied with furniture. Other variations need to be ordered separately using part numbers specified.

All accessory packs contain six screws for the six mounting points per plate.

Screws are a M4 threaded screw with micro-encapsulation to provide resistance against coming loose. Screws are supplied with concealed fix furniture. For screws longer than 65mm, order SP0655MBK (75mm screws).

Detention Series Square Plate Furniture Ordering Procedure

When ordering 04, 06, 13, 14, 15, 16, 59, 60, 61, 65, 66 or 67 functions with 3770 series, refer to "Cylinder Type" specification for difference in part numbers.

Sample part number 220D01NA/21LSS is made up of several sections. Choose your product by selecting an option from each section.

Plate	Function	Engraving Options	Cylinder Type	Lever/ Knob	Handing	Finish
220	D 01	N	A	21	L	SS

Plate	Function - Handed cont.	Engraving Options	Knob	Finish
Concealed Fix 162mm x 180mm	220	Pull Handle and Turnknob 27	Standard Knob 21	Satin Stainless Steel SS
Visible Fix 162mm x 180mm	221	Pull Handle and Privacy Indicating Emergency Turn 28	Webbed Knob 22	
Function		Pull Handle and Privacy Indicating Turnknob 29	Lever - Handed	
Plain Plate	07	Flush Pull and Cylinder 32	Lever 23*	
Pull Handle Only	24	Flush Pull and Emergency Turn 33	Handing	
Flush Pull Only	31	Flush Pull and Turnknob 34	Left Handed L	
Function - Handed		Flush Pull and Privacy Indicating Emergency Turn 35	Right Handed R	
Cylinder Only	00	Flush Pull and Privacy Indicating Turnknob 36	*Lever cannot be used in combination with pull handle	
Cylinder and Lever/Knob	01	Pull Handle and Knob 56	Cylinder Type	
Emergency Turn Only	02	Pull Handle, Cylinder and Knob 57	Australian Oval A	
Emergency Turn and Lever	03	Pull Handle, Emergency Turn and Knob 58	No Cylinder - Selector S*1	
Turnknob and Lever/Knob	04	Pull Handle, Turnknob and Knob 59	No Cylinder - Synergy N	
Lever/Knob Only	05	Pull Handle, Privacy Indicating Emergency Turn and Knob 60	No Cylinder / No Tailbar - Selector SN*2	
Turnknob Only	06	Pull Handle, Privacy Indicating Turnknob and Knob 61	No Cylinder / No Tailbar - Synergy NN	
Cylinder and Fixed Lever/Knob	08	Flush Pull and Lever/Knob 62	*1Only applies to 04, 06, 13, 14, 15, 16, 59, 60, 61, 65, 66 and 67 functions.	
Fixed Lever/Knob Only	09	Flush Pull and Cylinder and Lever/Knob 63	*2Only applies to 15, 16, 61 and 67 functions.	
Privacy Indicating Emergency Turn Only	13	Flush Pull and Emergency Turn and Lever/Knob 64		
Privacy Indicating Emergency Turn and Lever/Knob	14	Flush Pull and Turnknob and Lever/Knob 65		
Privacy Indicating Turnknob Only	15	Flush Pull and Privacy Indicating Emergency Turn and Lever/Knob 66		
Privacy Indicating Turnknob and Lever/Knob	16	Flush Pull and Privacy Indicating Turnknob and Lever/Knob 67		
Cylinder, Lever/Knob and LED	20			
Cylinder, Fixed Lever/Knob and LED	21			
Lever/Knob and LED	22			
Cylinder and LED	23			
Pull Handle and Cylinder	25			
Pull Handle and Emergency Turn	26			

Detention Series Square Plate Furniture Ordering Procedure

When ordering 04, 06, 13, 14, 15 or 16 functions with 3770 series, refer to “Cylinder Type” specification for difference in part numbers.

Sample part number 222D04NS/21LSS is made up of several sections. Choose your product by selecting an option from each section.

Plate	Function	Engraving Options	Cylinder Type	Lever/ Knob	Handing	Finish	
222	D	04	N	S	21	L	SS

Plate	Engraving Options	Knob	Finish				
Concealed Fix 162mm x 76mm	222	Standard Knob	21	Satin Stainless Steel	SS		
Visible Fix 162mm x 76mm	223	Webbed Knob	22	Note: Cylinder guards must be ordered with all cylinder function plates. All turnknob functions are supplied with tailbars and clutching mechanisms as standard.			
Function							
Cylinder Only	00	Lever - Handed	Lever	23			
Cylinder and Lever/Knob	01	Handing	Left Handed	L			
Emergency Turn Only	02	Right Handed	R				
Emergency Turn and Lever	03						
Lever/Knob Only	05						
Plain Plate	07						
Cylinder and Fixed Lever/Knob	08						
Fixed Lever/Knob Only	09						
Privacy Indicating Emergency Turn Only	13						
Privacy Indicating Emergency Turn and Lever/Knob	14						
Cylinder, Lever/Knob and LED	20						
Cylinder, Fixed Lever/Knob and LED	21						
Lever/Knob and LED	22						
Cylinder and LED	23						

Function - Handed	
Turnknob and Lever/Knob	04
Turnknob only	06
Privacy Indicating Turnknob Only	15
Privacy Indicating Turnknob and Lever/Knob	16