

# 2615 CAM Action Door Closer with Slide Arm



The Lockwood 2615 Series is a non-handed CAM Action Door Closer.

Due to the CAM design this premium door closer is light to open but still strong enough to close a door.

The Lockwood 2615 Door Closer can be adjusted to meet the requirements of a light door opening resistance and is ideal for both interior and exterior doors.

The Lockwood 2615 is light to open, but its adjustable closing force is high enough for heavy duty applications.

For disabled toilet applications where a breakout feature is required, the double action of the mechanism allows the door to be operated in the opposite direction for easy access into the room.

One model (2615) covers right hand and left hand applications, pull side/push side applications and also features an adjustable arm height.

The 2615 has a very high efficiency of 70% - 80%.

## Specifications

<b>Power</b>	EN adjustable 1 to 5
<b>Back check (BC)</b>	Adjustable
<b>Hold Open</b>	Adjustable. Hold-open can be set at any angle up to 120° of opening
<b>Handing</b>	Non-handed Suitable for left or right hand doors
<b>Cover</b>	Formed metal cover
<b>Materials</b>	Cast aluminium body manufactured from high-performance silicon alloy
<b>Mechanism</b>	CAM action
<b>Mounting</b>	Pull side, push side and over-door mounting
<b>Valves</b>	Two pressure relief valves are a standard feature to protect against abuse
<b>Delayed Action</b>	Adjustable
<b>Closing Speed</b>	Adjustable
<b>Latching Speed</b>	Adjustable

## Ordering Information

Model	Part Number	Finish
<b>Slide Arm Closer</b>	2615DASSS	Satin Stainless Steel
	2615DAPB	Gold
	2615DASIL	Silver
	2615DABLK	Black
<b>Hold Open Device</b>	2616-152	
<b>Opening Damper</b>	2616-153	
<b>Push Side Angle Plate</b>	2616-104SIL	Silver
	2616-104PC	Black
<b>Mounting Plate</b>	2615-180SIL	Silver

## Standards and Compliance



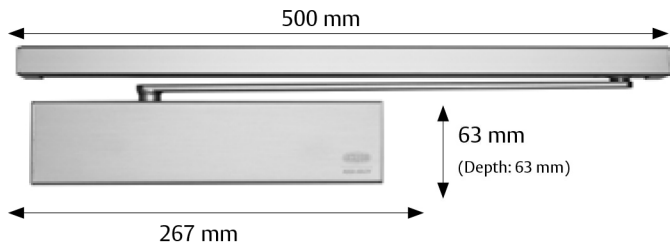
The Lockwood 2615 series closer has been successfully tested up to four hours (depending on type of doorset) on fire door assemblies in accordance with Australian Standard AS1905.1:2005, Part: Fire Resistant Door sets.

Note: Hold open option is not approved on any fire door.

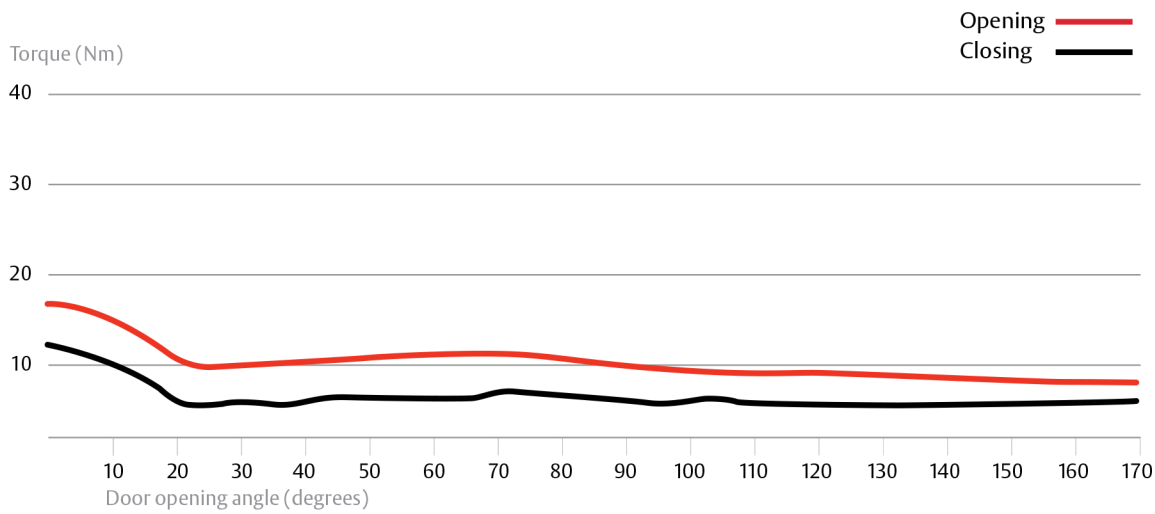


Disabled Access Australian Standard (AS1428.1) Design for access and mobility.

# 2615 CAM Action Door Closer with Slide Arm



## Movement Curve



**Note:** Movement curve represents approximate forces required to operate a size 1 door closer. The illustration is an approximation based on one set of parameters. Any change to these parameters will result in a variation of performance.

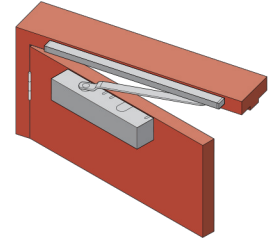
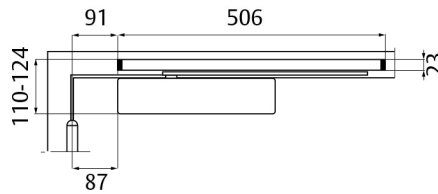
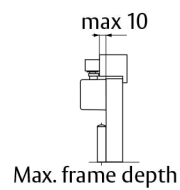
## Door Closer Selection Chart

Recommended Door Width	Door Weight (kg) Max	Closer Power Size	Closing Torque (Nm)
750mm	20	1	9 - <13
850mm	40	2	13 - <18
950mm	60	3	18 - <26
1100mm	80	4	26 - <37
1250mm	100	5	37 - <54
1400mm	120	6	54 - <87
1600mm	160	7	87 - <140

# 2615 CAM Action Door Closer with Slide Arm

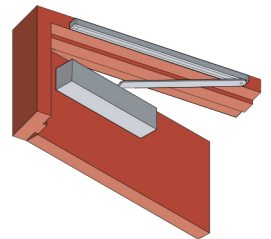
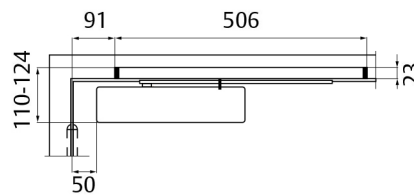
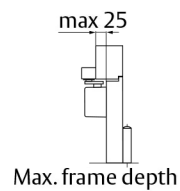
## Pull Side - Standard Mounting

Non hold-open permits door opening to 170°, and 160° when opening damper is used. When hold-open device is installed, the opening angle (hold-open) can be set to a maximum of 120°.



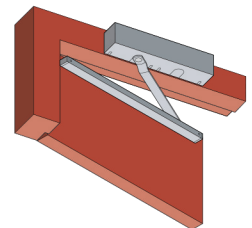
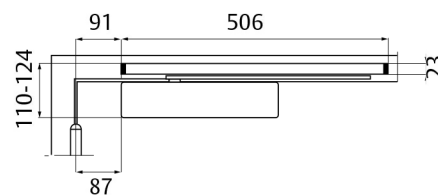
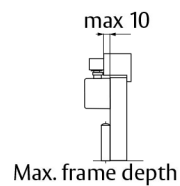
## Push Side - Standard Mounting

Non hold-open permits door opening to 120°, and 110° when opening damper is used. When hold-open device is installed, the opening angle (hold-open) can be set to a maximum of 120°.



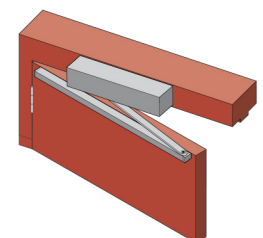
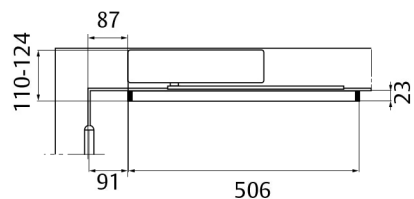
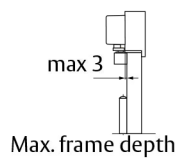
## Push Side - Over-Door Mounting

Non hold-open permits door opening to 120°, and 110° when opening damper is used. When hold-open device is installed, the opening angle (hold-open) can be set to a maximum of 120°.



## Pull Side - Door Mounting

Non hold-open permits door opening to 170°, and 160° when opening damper is used. When hold-open device is installed, the opening angle (hold-open) can be set to a minimum of 120°.

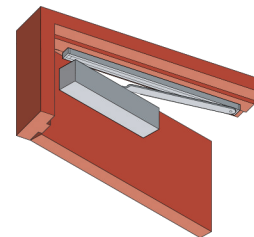
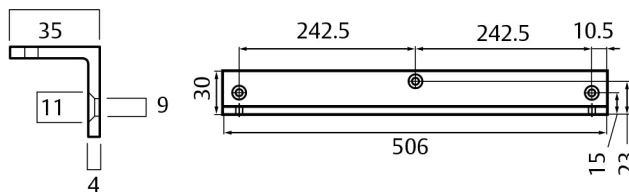


# 2615 CAM Action Door Closer with Slide Arm

## Angle Plate

**Part Number** 2616-104SIL

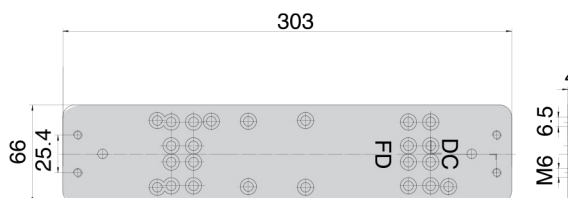
Allows the side rail to be installed below the door jamb. Required when the face of the door jamb exceeds 25mm from the face of the door in the closed position.



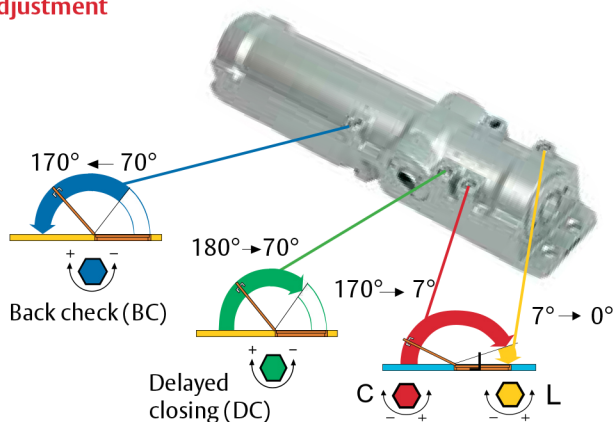
## Mounting Plate

**Part Number** 2615-180SIL

For use on glazed doors with small top rail, this plate allows the closer to project below the top rail, at the same time concealing the back of the closer to enhance the appearance as seen through the glass.

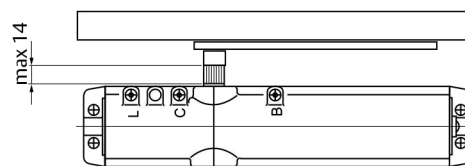


## Adjustment



## Adjustment

Adjusting the Arm Height



The arm height can be adjusted (by a maximum of 14 mm) by moving the grooved spindle in a vertical direction.

## Opening Damper

**Part Number** 2616-153

Max. damping angle -110°  
Designed to brake the door before hitting the door stopper.  
Required for fire door applications.



## Hold Open Device

**Part Number** 2616-152

Adjustable hold-open force  
Max. hold-open angle -110°

