

Selector® 3774 MkII Passage Latch



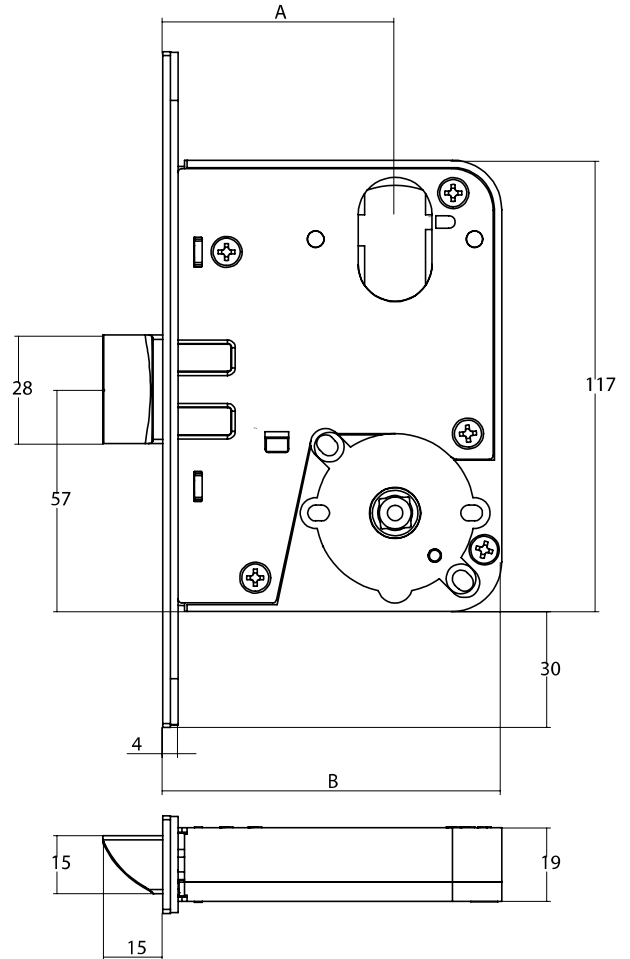
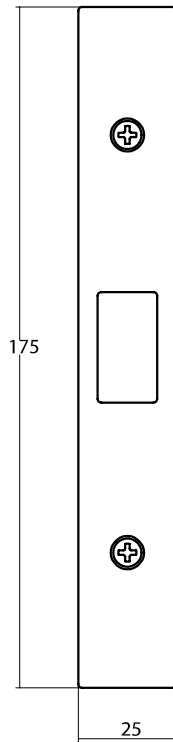
Description

The Passage latch only has a plainlatch. It allows operation of outside and inside handles at all times with no locking functions. Ideal for interconnecting doors.

Product Details

Backset	Available in 60, 89 and 127mm backsets.
Furniture	Compatible with most Lockwood rose and plate furniture including Brass Door Furniture, Robert Watson Series, Artefact Series II, Ovation Series and VSR Series. Refer to lockweb.com.au for further details.
Latch	Plainlatch only
Standard Finishes	Stainless Steel (SS) Other finishes available via finish kit conversions.

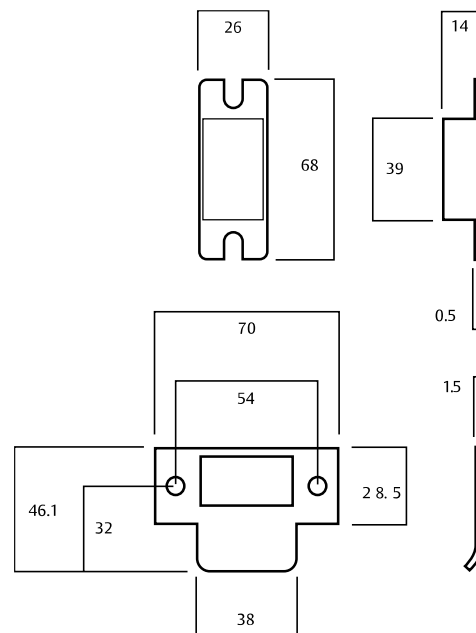
Selector® 3774 MkII Passage Latch



Selector® 3774 Passage Latch

Part Number	3774	4774	5774
Dimension A	60	89	127
Dimension B	88	117	155

Note: Passage Latch primary lock only available in 60mm backset (3774).
For extended backset options, please order 4772/5772 primary lock and
configure accordingly.

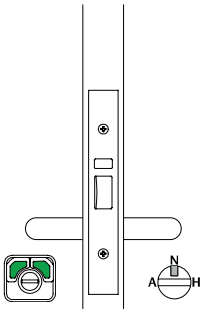


Selector® 3774 MkII Passage Latch

Passage Latch

Part Number 3774

No locking function. Plainlatch only.
Outside: Opened by handle at all times.
Inside: Opened by handle at all times.



Notes:
Setting instructions only apply if 3772 is used, disregard instructions if using 3774.
All drawings shown are in right hand configuration.
Part numbers shown above are for 60mm backset lock, if 89mm is required substitute 3 for 4 i.e. 4772, or if 127mm lock is required, substitute 3 for 5 i.e. 5772

Legend	
Hub Setting	
Lock Function Setting	
Cam or Adaptor	