

724SR Series Slide Arm Door Closer



The Lockwood Rack & Pinion Slide Arm Series provides for a cleaner, more aesthetic appearance on the door whilst utilizing the same robust features and benefits of Rack and Pinion functionality.

Specifications

Power	EN adjustable 2 to 4
Back check (BC)	Adjustable
Hold Open	Adjustable. Hold-open can be set at any angle up to 130° of opening
Handing	Non-handed Suitable for left or right hand doors
Cover	Clip-on
Materials	Extruded aluminium body manufactured from high-performance silicon alloy
Mechanism	Rack and pinion design
Mounting	Regular and over-door
Valves	Adjustable closing and latching speed valves with overload protection

Ordering Information

Model	Part Number	Finish
Slide Arm	724SRSSS	Satin Stainless Steel
	724SRPSS	Polished Stainless Steel
	724SR SIL	Silver
	724SRGLD	Gold
	724SRBLK	Black

For formed cover with these finishes add:
7724-171 (SSS,PSS,GLD) option
724SR SIL + 7724-171SSS = 724SRSSS

Standards and Compliance



The Lockwood 724SR series closer has been successfully tested upto four hours (depending on type of doorset) on fire door assemblies in accordance with Australian Standard AS1905.1:2005, Part: Fire Resistant Door sets.

Note: Hold open option is not approved on any fire door.

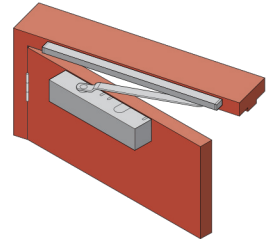
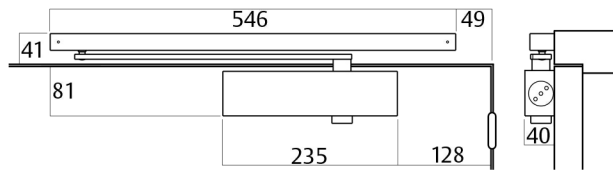
724SR Series Slide Arm Door Closer

724SR Slide Arm Pull Side

Part Numbers

724SR

Closer installed on pull side of door. This mounting position permits opening of 130°.

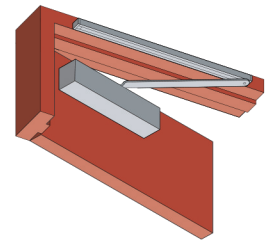
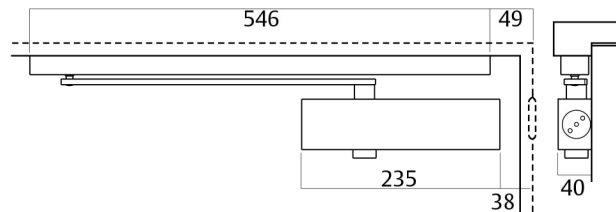


7724SR Slide Arm Push Side

Part Numbers

724SR

Closer installed on push side of door. This mounting position permits opening of 115°.



7724SR Slide Arm Over Door Mounting Push Side

Part Numbers

724SR

Closer installed on push side of door and top rail where conditions do not allow parallel mounting. This mounting position permits opening of 115°.

