

# Induro and Optimum Mortice Lock Accessories

## Standard / Extended Lip Hinged Door Strikes (reversible handing)

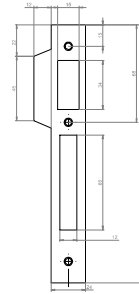
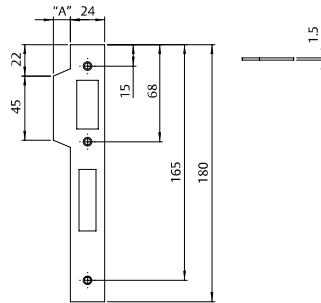
### Part Number      Dimensions "A"

OPS001SS      12mm

OPS002SS      43mm

OPS003SS      60mm

INDU004SS      12mm



INDU004SS

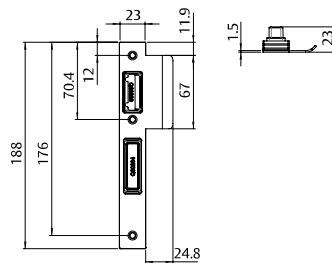
A strike box is available to suit these strikes (OPSBOX)

## Strike and Strike Box Kits

### Part Number      Handing

P3352CDLSS      Left Hand (shown)

P3352CDRSS      Right Hand



## Timber Door Strike Kit

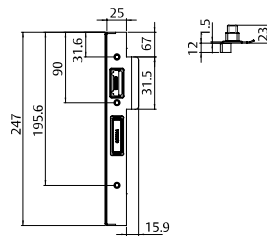
All kits include insert for roller bolt lock if required

## Strike and Strike Box Kits

### Part Number      Handing

P3352TFLSS      Left Hand (shown)

P3352TFRSS      Right Hand



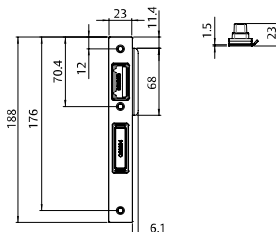
## Timber Door Rebate Kit

All kits include insert for roller bolt lock if required

# Induro and Optimum Mortice Lock Accessories

## Strike and Strike Box Kits

| Part Number | Handing           |
|-------------|-------------------|
| P3352AFLSS  | Left Hand (shown) |
| P3352AFRSS  | Right Hand        |

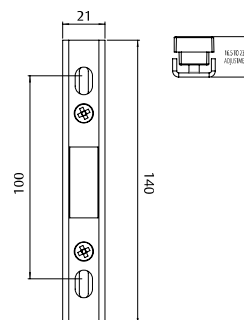
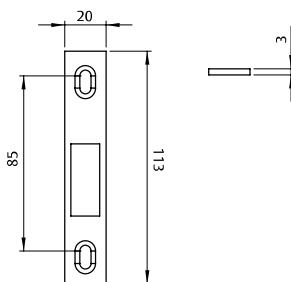


## Aluminium French Door Kit

All kits include insert for roller bolt lock if required

## Sliding Door Strikes

| Part Number | Type       |
|-------------|------------|
| P33600      | Adjustable |
| PQ70188     | Fixed      |



## Sliding Door Strikes

# Induro and Optimum Mortice Lock Accessories

## Standard Finishes

|                       |     |
|-----------------------|-----|
| Black                 | BLK |
| Satin Chrome Pearl    | SP  |
| Polyester Powder Coat | PPC |

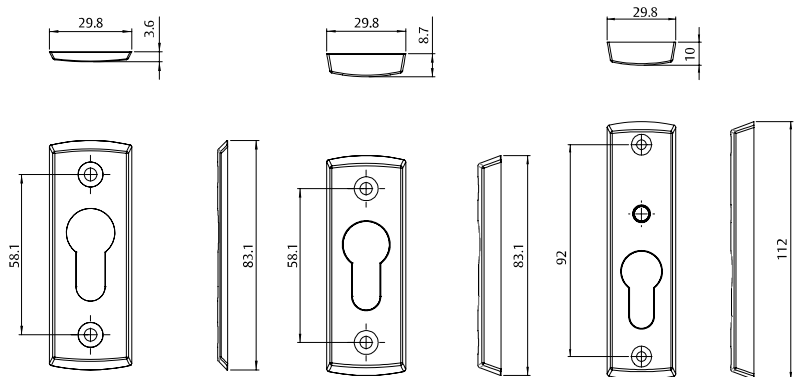
## Cylinder Escutcheons

Ideal for use with the Sliding Door and Roller Bolt Locks.

## Cylinder Escutcheons

### Part Number Description

|        |  |
|--------|--|
| PA2101 | Palladium Low Profile Cylinder Escutcheon                    |
| PA2102 | PPC Palladium High Profile Cylinder Escutcheon               |
| PA2202 | Palladium High Profile Cylinder Escutcheon Pair (x2)         |
| PA2103 | Palladium Xtra (Indicating) High Profile Cylinder Escutcheon |



## Standard Finishes

|                       |     |
|-----------------------|-----|
| Satin Chrome Pearl    | SP  |
| Polyester Powder Coat | PPC |

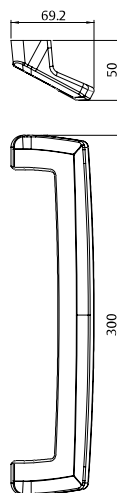
## Aria D Handle

Designed for use with the Pinnacle/Optimum Sliding Door Locks, suits door thickness from 25-70mm.

## Aria D Handle

### Part Number Description

|          |                                 |
|----------|---------------------------------|
| PH320/27 | Aria D Handle Back to Back Set  |
| PH321/27 | Aria D Handle Internal Half Set |

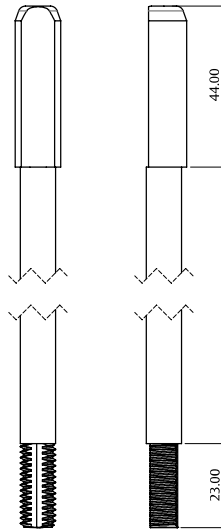
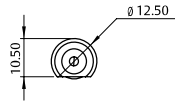


# Induro and Optimum Mortice Lock Accessories

## Shoot Bolt Rods

**Part Number** P33096

For use with 4PT Hinged and 3PT Sliding Door Locks. Kit includes 1m and 1.3m rods, rod ends and tips.



## Multipoint Extension Kit

**Part Number** P84017

For use with 4PT Hinged and 3PT Sliding Door Locks on doors over 2.4m