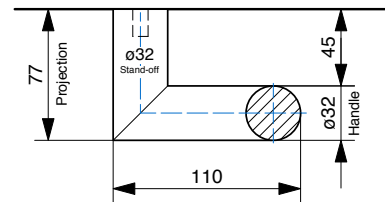
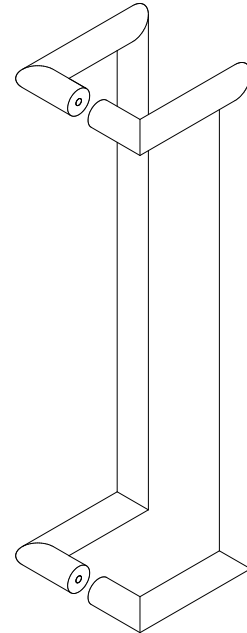


DDA Compliant - 316 Marine Grade Stainless Steel

CODE	SECTION	PROJECTION	LENGTH	CTC
BAH-204/A	Dia 32	77	332	300
BAH-204/B	Dia 32	77	482	450
BAH-204/C	Dia 32	77	632	600
BAH-204/D	Dia 32	77	932	900
BAH-204/E	Dia 32	77	1232	1200
BAH-204/F	Dia 32	77	1532	1500
BAH-204/G	Dia 32	77	1832	1800
BAH-204/H	Dia 32	77	2132	2100
BAH-204/I	Dia 32	77	2432	2400

• Special sizes available upon request

FINISHES	
Standard:	SSS/PSS
Options:	Powdercoat Dulux
Electroplate:	SBN ORB BN CO

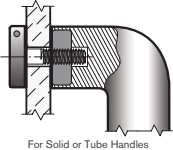


How to specify

	PRODUCT CODE	LENGTH	FINISH	FIXING	DOOR TYPE
Example:	BAH-204/A	332mm	SSS	B	GD

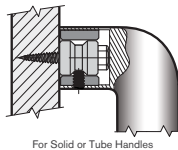
D = DISK FIX

Disk fixed - **Single**



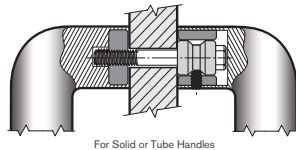
C = CONCEALED FIX

Coach Bolt fixed - **Single**



B = BACK to BACK FIX

Back to Back fixed - **Pair**



PLEASE SPECIFY THE DOOR TYPE
GD: Glass
TM: Timber
AL: Aluminium