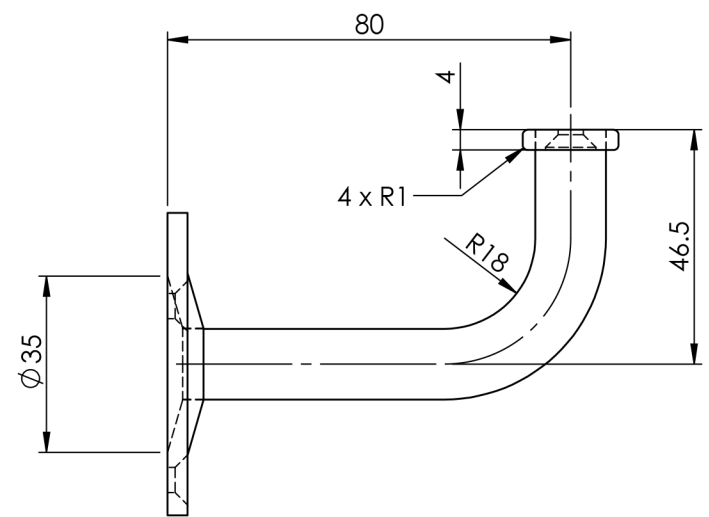
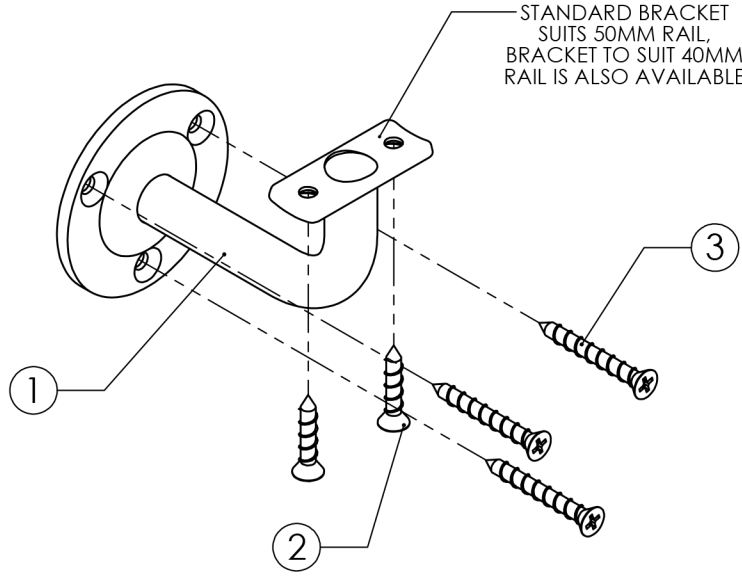


SECTION A-A

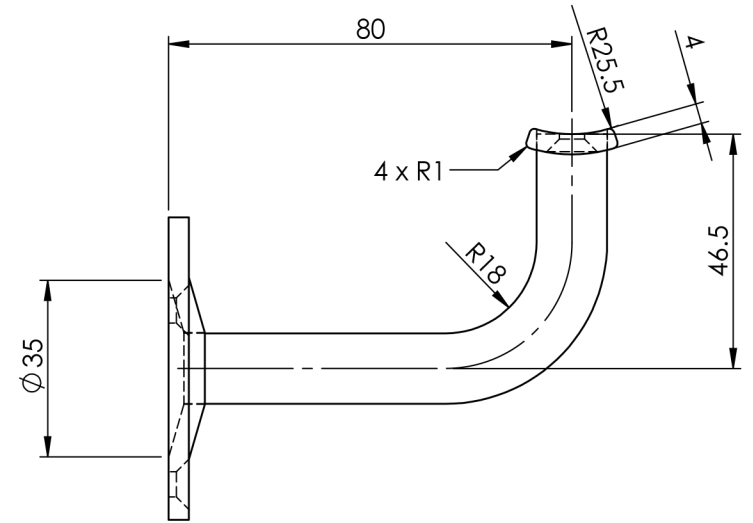
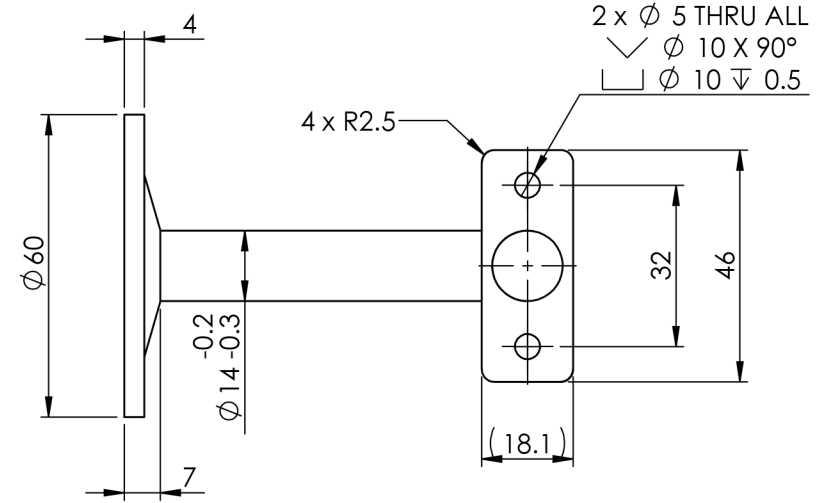
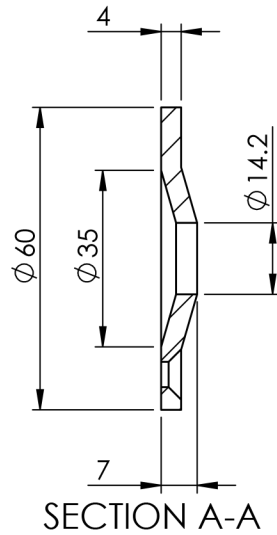
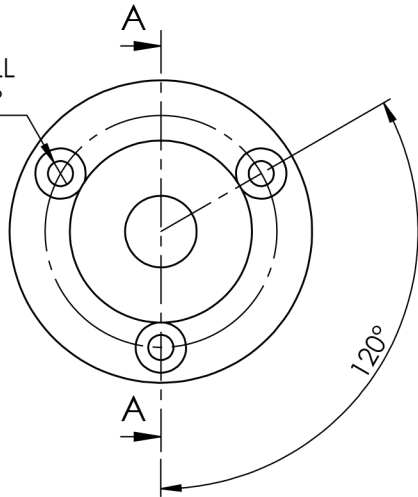


ITEM NO.	PART NUMBER	DESCRIPTION	QTY.	DRAWN	B DOOLAN	3/11/2016	CAT NO:	REV: B
				CHK'D	G SIMPSON	3/11/2016		
1	SS444FT	BRACKET	1	MATERIAL	316 STAINLESS STEEL			SS444FT DESCRIPTION: EXPOSED EXTENDED STAIR RAIL BRACKET-COMPLIES WITH AUSTRALIAN STANDARD AS1428.1-2009
2	SCS-5-25	SCREW-C/SUNK-5MMX25MM	2	FINISH	POLISHED			
3	SCS-5-40	SCREW-C/SUNK-5MMX40MM	3	WEIGHT				
				 www.emro.com.au <small>This drawing has been made with due care and attention however Emro do not accept any responsibility for variations. This drawing and information contained is the property of Emro and cannot be used without their consent.</small>				

STANDARD BRACKET
SUITS 50MM RAIL,
BRACKET TO SUIT 40MM
RAIL IS ALSO AVAILABLE



3 x ϕ 5 THRU ALL
 \surd ϕ 10 X 90°



ITEM NO.	PART NUMBER	DESCRIPTION	QTY.	DRAWN	B DOOLAN	3/11/2016	CAT NO:	REV: B
				CHK'D	G SIMPSON	3/11/2016		
1	SS444CT	BRACKET	1	MATERIAL	316 STAINLESS STEEL			<p style="text-align: center; font-size: 24pt; font-weight: bold;">SS444CT</p> <p>DESCRIPTION:</p> <p style="text-align: center;">EXPOSED EXTENDED STAIR RAIL BRACKET-COMPLIES WITH AUSTRALIAN STANDARD AS1428.1-2009</p>
2	SCS-5-25	SCREW-C/SUNK-5MMX25MM	2	FINISH	POLISHED			
3	SCS-5-40	SCREW-C/SUNK-5MMX40MM	3	WEIGHT				
				<p style="text-align: center; font-weight: bold; font-size: 18pt;">EMROWARE™</p> <p style="text-align: center;">www.emro.com.au</p> <p style="font-size: 8pt;">This drawing has been made with due care and attention however Emro do not accept any responsibility for variations. This drawing and information contained is the property of Emro and cannot be used without their consent.</p>				