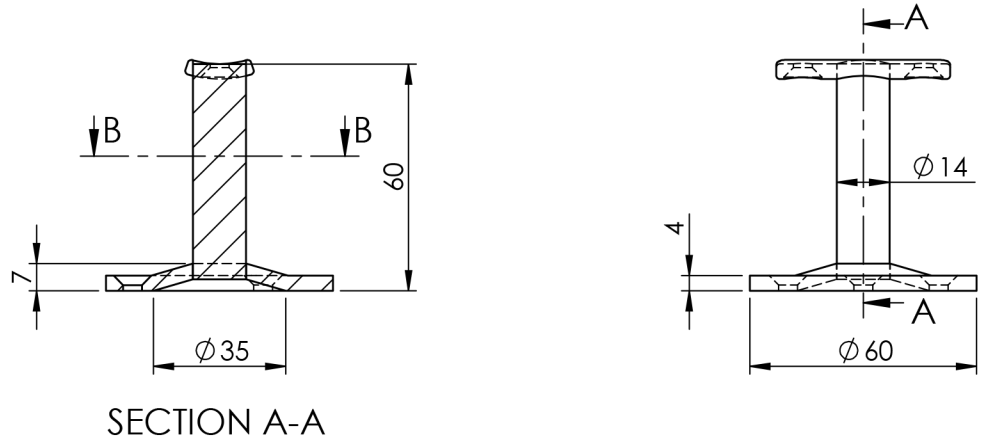
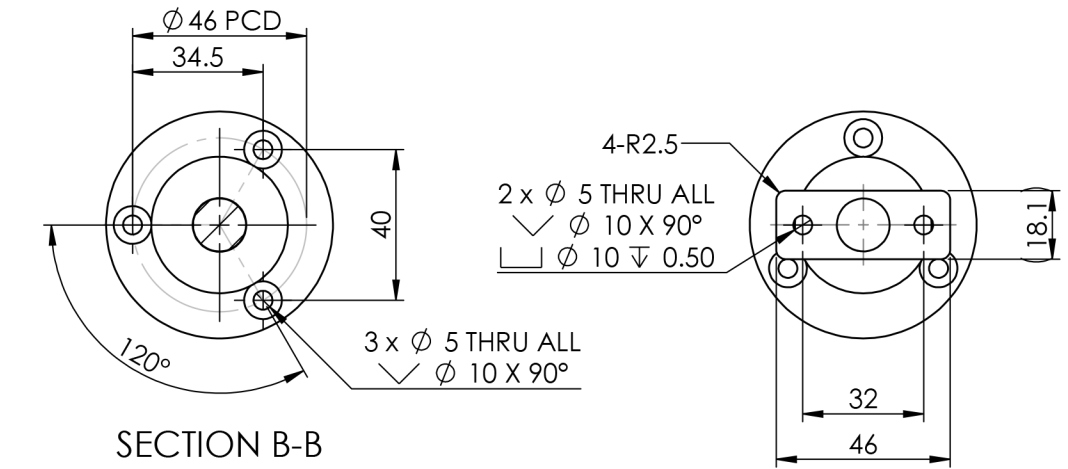
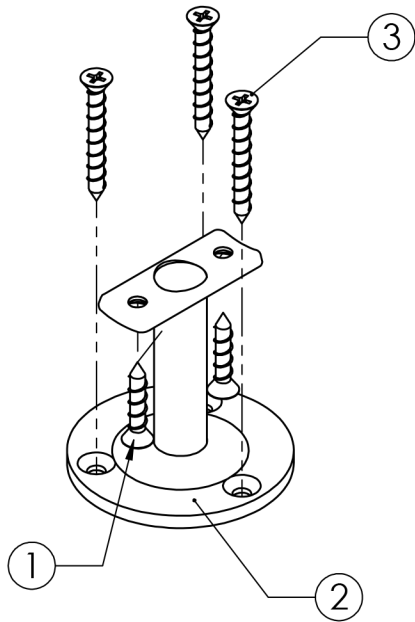


ITEM NO.	PART NUMBER	DESCRIPTION	QTY.
1	SCS-5-25	SCREW-C/SUNK-5MMX25MM	2
2	SS445FT	BRACKET	1
3	SCS-5-40	SCREW-C/SUNK-5MMX40MM	3

DRAWN	B DOOLAN	17/06/2015	CAT NO:	REV: A
CHK'D	U WAUGE	17/06/2015		
MATERIAL	304 STAINLESS STEEL		DESCRIPTION:	<p>SS445FT</p> <p>STRAIGHT EXPOSED STAIR RAIL BRACKET- COMPLIES WITH AUSTRALIAN STANDARD AS1428.1-2009</p>
FINISH	BRUSHED			
WEIGHT			<p>EMROWARE™</p> <p>www.emro.com.au</p> <p><small>This drawing has been made with due care and attention however Emro do not accept any responsibility for variations. This drawing and information contained is the property of Emro and cannot be used without their consent.</small></p>	



ITEM NO.	PART NUMBER	DESCRIPTION	QTY.
1	SCS-5-25	SCREW-C/SUNK-5MMX25MM	2
2	SS445CT	BRACKET	1
3	SCS-5-40	SCREW-C/SUNK-5MMX40MM	3

DRAWN B DOOLAN 17/06/2015 CHK'D U WAUGE 17/06/2015 MATERIAL 304 STAINLESS STEEL FINISH BRUSHED WEIGHT	CAT NO: SS445CT DESCRIPTION: STRAIGHT EXPOSED STAIR RAIL BRACKET-COMPLIES WITH AUSTRALIAN STANDARD AS1428.1-2009	REV: A
---	---	------------

www.emro.com.au

This drawing has been made with due care and attention however Emro do not accept any responsibility for variations. This drawing and information contained is the property of Emro and cannot be used without their consent.