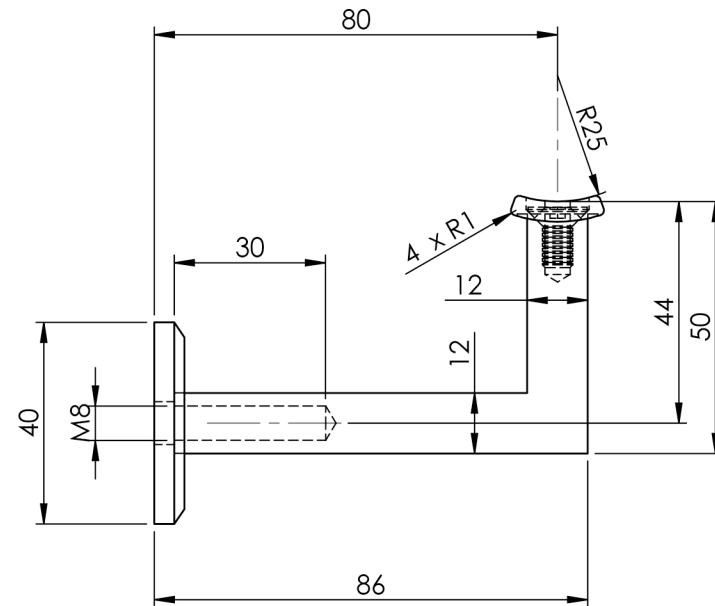


DETAIL ITEM (5)



ITEM NO.	PART NUMBER	DESCRIPTION	QTY.
1	B-CS-M6-12	BOLT-C/SUNK-M6X12MM	1
2	SCS-5-40	SCREW-C/SUNK-5MMX40MM	2
3	SS606CT-1	ARM	1
4	SS606CT-2	RAIL MOUNT	1
5	SS606CT-3	BASE	1
6	LAG SCREW-M8-80	LAG SCREW-M8X80MM	1

DRAWN	B DOOLAN	20/07/2016	CAT NO:	REV: A
CHK'D	M ROTH	20/07/2016		
MATERIAL	316 STAINLESS STEEL		DESCRIPTION:	<p style="text-align: center; font-size: 24px; font-weight: bold;">SS606CT</p> <p style="text-align: center;">ARCHITECTURAL STAIR RAIL BRACKET- COMPLIES WITH AUSTRALIAN STANDARD AS1428.1-2009</p>
FINISH	POLISHED			
WEIGHT				