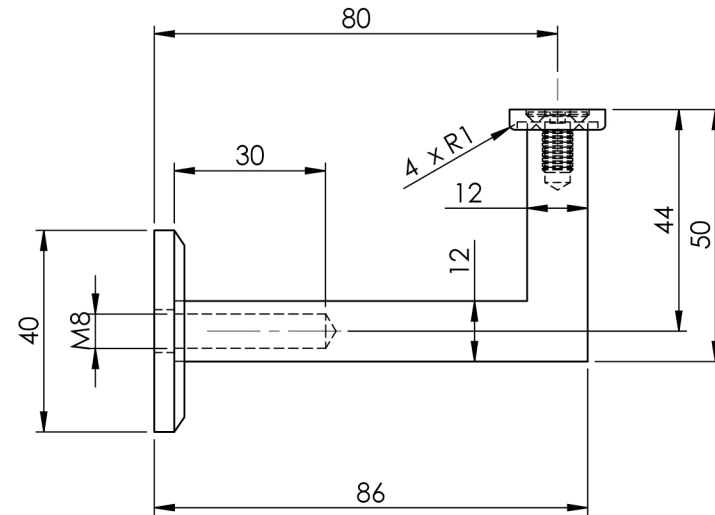


DETAIL ITEM ⑤



ITEM NO.	PART NUMBER	DESCRIPTION	QTY.
1	B-CS-M6-12	BOLT-C/SUNK-M6X12MM	1
2	SCS-5-40	SCREW-C/SUNK-5MMX40MM	2
3	SS605GFT-2	RAIL MOUNT	1
4	SS606CT-1	ARM	1
5	SS606CT-3	BASE	1
6	LAG SCREW-M8-80	LAG SCREW-M8X80MM	1

DRAWN	B DOOLAN	20/07/2016
CHK'D	M ROTH	20/07/2016
MATERIAL	316 STAINLESS STEEL	
FINISH	POLISHED	
WEIGHT		

CAT NO:

SS606FT

REV: A

DESCRIPTION:

ARCHITECTURAL STAIR RAIL BRACKET-
COMPLIES WITH AUSTRALIAN
STANDARD AS1428.1-2009