

ITEM NO.	PART NUMBER	DESCRIPTION	QTY.
1	SCS-5-25	SCREW-C/SUNK-5MMX25MM	2
2	SCS-5-40	SCREW-C/SUNK-5MMX40MM	4
3	SS80CT	BRACKET	1
4	SS80CT-1	COVER	1

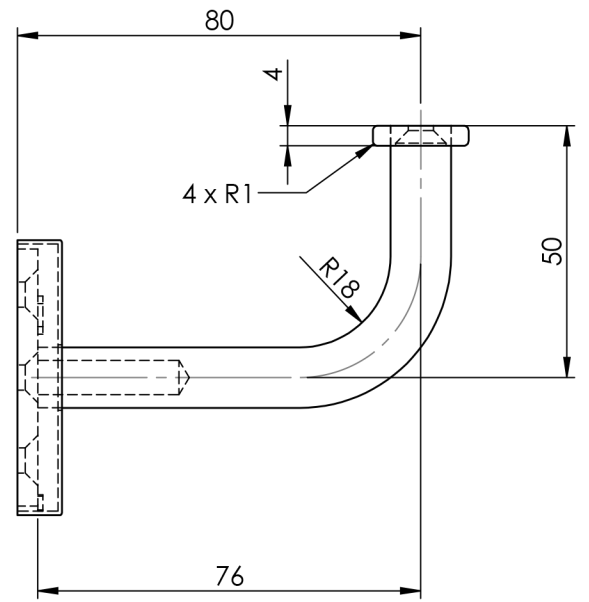
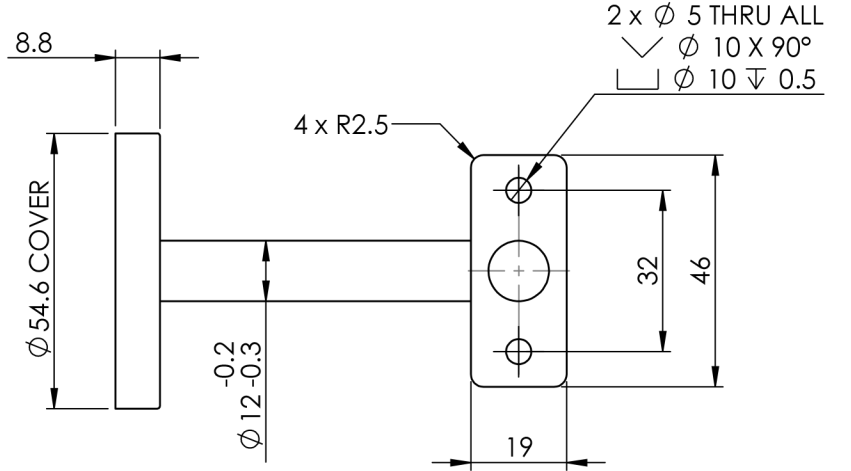
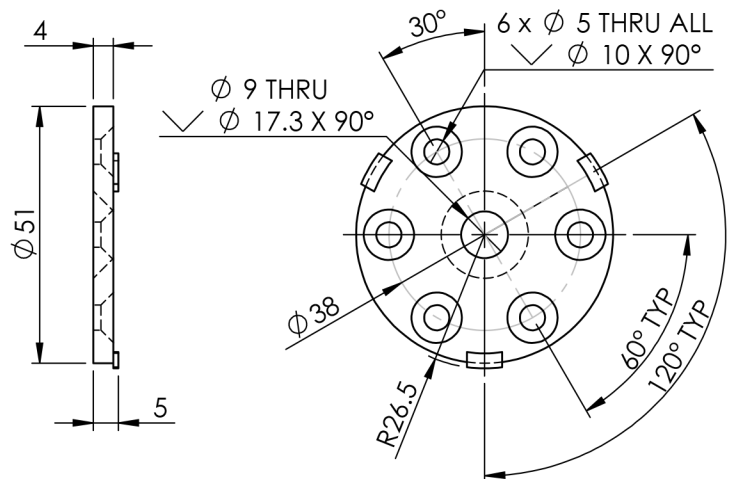
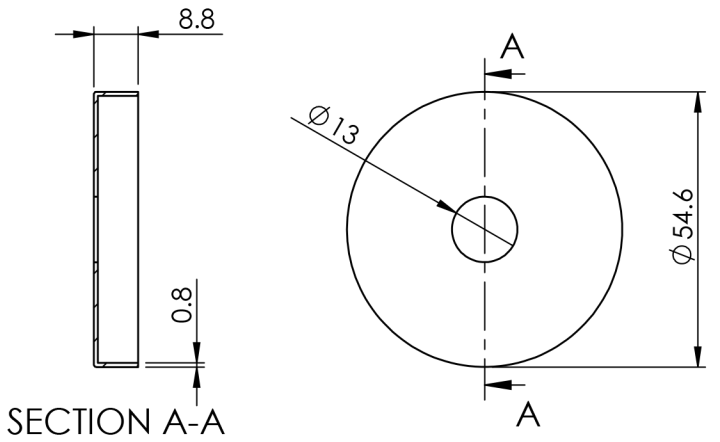
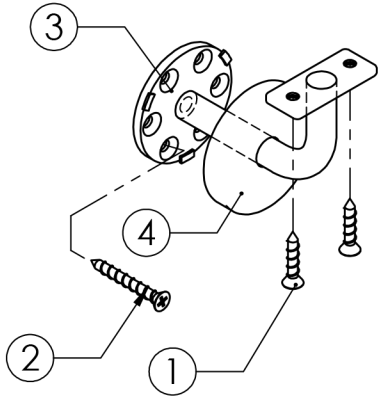
DRAWN	B DOOLAN	14/06/2016
CHK'D	U WAUGE	14/06/2016
MATERIAL	304 STAINLESS STEEL	
FINISH	BRUSHED / POLISHED	
WEIGHT		

EMROWARE™
www.emro.com.au

This drawing has been made with due care and attention. However Emro do not accept any responsibility for variations. This drawing and information contained is the property of Emro and cannot be used without their consent.

CAT NO:	SS80CT	REV: A
---------	--------	--------

DESCRIPTION:
EXTENDED CONCEALED STAIR RAIL
BRACKET-COMPLIES WITH AUSTRALIAN
STANDARD AS1428.1-2009



ITEM NO.	PART NUMBER	DESCRIPTION	QTY.
1	SCS-5-25	SCREW-C/SUNK-5MMX25MM	2
2	SCS-5-40	SCREW-C/SUNK-5MMX40MM	4
3	SS80FT	BRACKET	1
4	SS80CT-1	COVER	1

DRAWN	B DOOLAN	14/06/2016
CHK'D	U WAUGE	14/06/2016
MATERIAL	304 STAINLESS STEEL	
FINISH	BRUSHED / POLISHED	
WEIGHT		

EMROWARE™
www.emro.com.au

This drawing has been made with due care and attention however Emro do not accept any responsibility for variations. This drawing and information contained is the property of Emro and cannot be used without their consent.

CAT NO: **SS80FT**

REV: **A**

DESCRIPTION:
**EXTENDED CONCEALED STAIR RAIL
BRACKET-COMPLIES WITH AUSTRALIAN
STANDARD AS1428.1-2009**