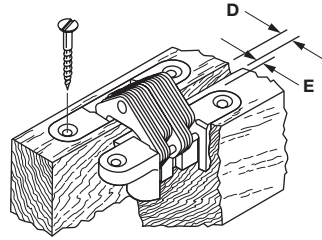
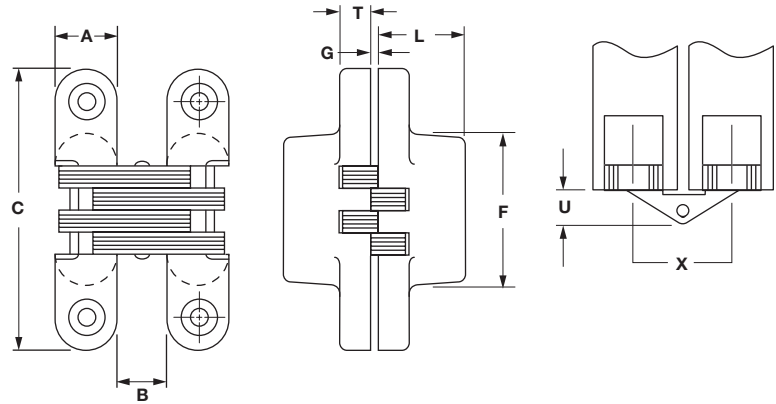
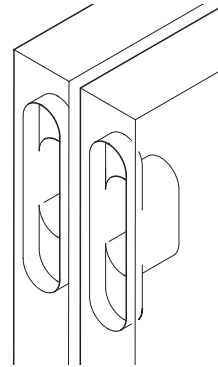


Opening angle: **180°**



Hole pattern



**Soss Invisible Hinges**

Material: Case: Zinc, die-cast; Linkage: Steel

	Supplier Item No.							
	101	203	204	208	212	216	218	220
Finish	Item No.							
satin brass	341.07.518	341.07.527	341.07.536	341.07.545	341.07.554	341.07.563	-	-
satin chrome	341.07.718	341.07.727	341.07.736	341.07.745	341.07.754	341.07.763	341.07.772	341.07.781
Wood thickness	13 - 18 (1/2"-11/16")	19 - 25 (3/4"-1")	19 - 25 (3/4"-1")	26 - 28 (1"-1 1/8")	29 - 31 (1 1/8"-1 1/4")	35 - 44 (1 3/8"-1 3/4")	45 - 50 (1 3/4"-2")	51 + (2"+)
Dimension								
<b>A</b>	9.5	12.7	12.7	15.9	19.1	25.4	28.6	34.9
<b>B</b>	7.5	9.1	9.1	11.5	13.5	18.3	22.2	27.0
<b>C</b>	42.9	44.5	60.3	69.9	95.3	117.5	117.5	139.7
<b>D</b>	2.8	2.8	2.8	3.6	4.0	5.6	9.5	12.7
<b>E</b>	2.4	3.2	3.2	4.0	4.8	6.4	6.4	7.1
<b>F</b>	22.2	19.1	31.8	34.1	52.4	65.9	61.9	74.6
<b>G</b>	0.8	0.8	1.6	1.2	1.2	1.6	1.6	1.6
<b>L</b>	11.5	18.3	18.3	23.0	27.4	36.5	41.7	49.2
<b>T</b>	5.6	4.8	6.4	7.1	9.5	11.9	10.3	11.9
<b>U</b>	4.8	6.4	6.4	7.9	10.3	14.3	13.5	17.5
<b>X</b>	17.1	21.8	21.8	27.4	32.5	43.7	50.8	61.9

**Supplied With**  
 Mounting screws

**Soss Wood Router Guide**

L x W x H: 12" x 3" x 5/8"

	#101	#203	#204	#208	#212	#216	#218	#220
Guide								
Bit Size	1/4"	3/8"	3/8"	3/8"	3/8"	1/2"	1/2"	1/2"
Item No.	002.13.810	002.13.811	002.13.812	002.13.813	002.13.814	002.13.815	002.13.816	002.13.817

Dimensional data not binding. We reserve the right to alter specifications without notice.



Dimensions in mm  
 Inches are approximate