


CDL7100 DIGITAL LOCKSET SPEC SHEET
Overall Dimensions

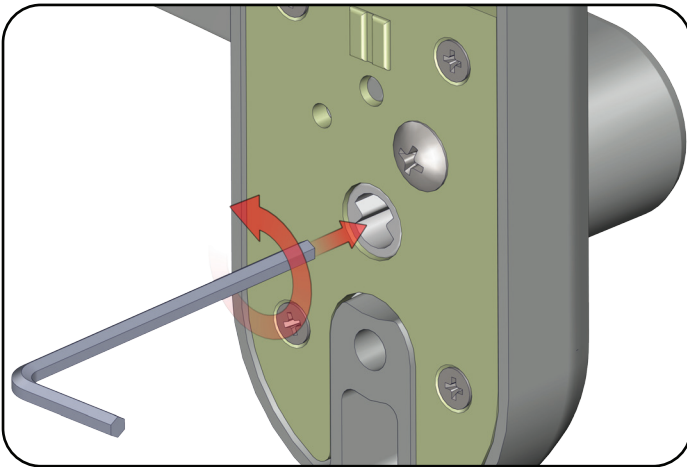
Specification notes:

- Should only be used in light to medium traffic areas. Not for use in high volume commercial areas
- It is ideal for storerooms and similar areas that don't have high volume traffic.
- Comes with a 2 hour fire rating for CDL7100SC model with use of a supplied latchset.
- Backset is 60mm standard, 70mm and 127mm backsets available as an option.
- Internal lever handle complies with latest BCA standards: **The clearance between the handle and the back plate or door face at the centre grip section of the handle shall be not less than 35 mm and not more than 45 mm.**



CDL7100 DIGITAL LOCKSET SPEC SHEET

- Supplied with a reversible internal lever handle that allows fitting to left or right hand opening doors.

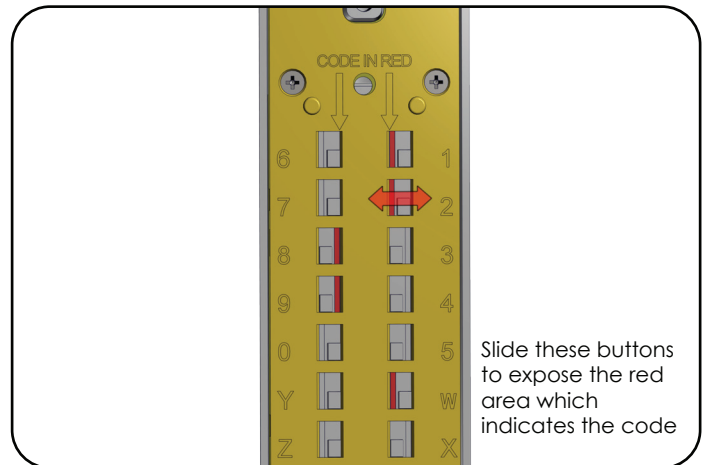


Loosen Lever handle Screw.

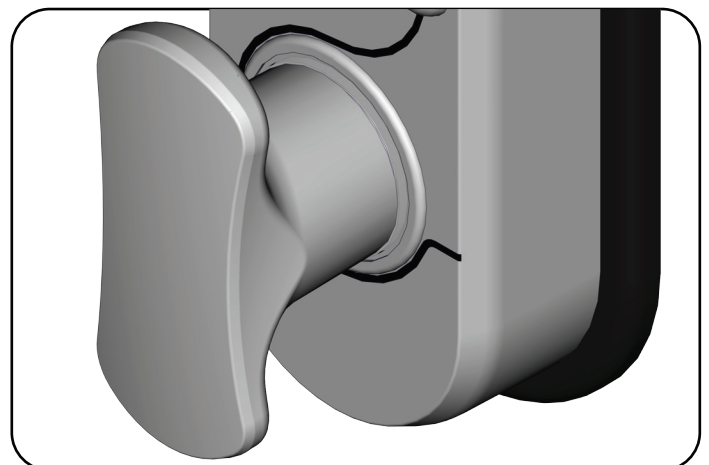


Swap over handing screw and reverse handle.

- Easy to change user codes. Simply slide the code change buttons into the desired position on the back of the front assembly.



- Bespoke easy grip outer knob provides purchase to help open the door.

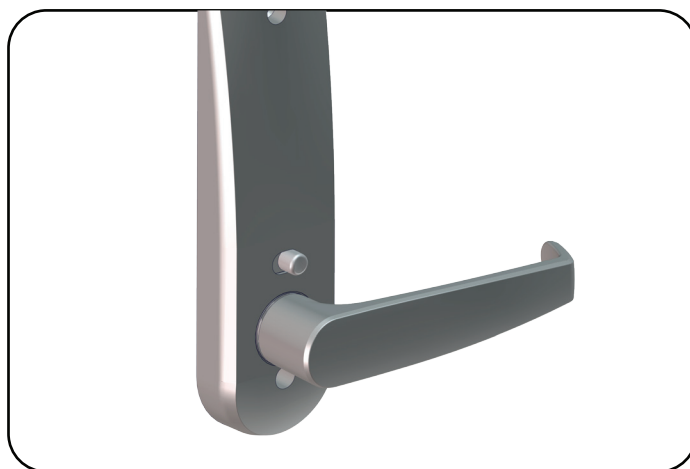


**CDL7100 DIGITAL LOCKSET SPEC SHEET**

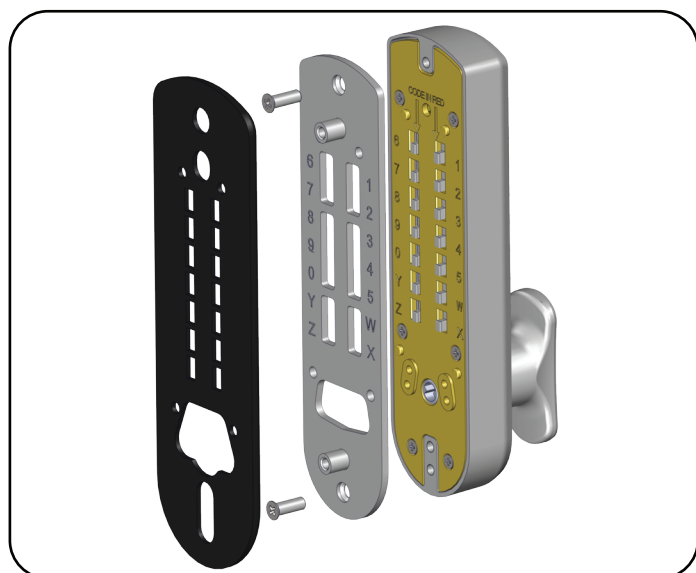
- Ball bearing buttons used for code entry. This makes it extremely difficult to manipulate the lock.



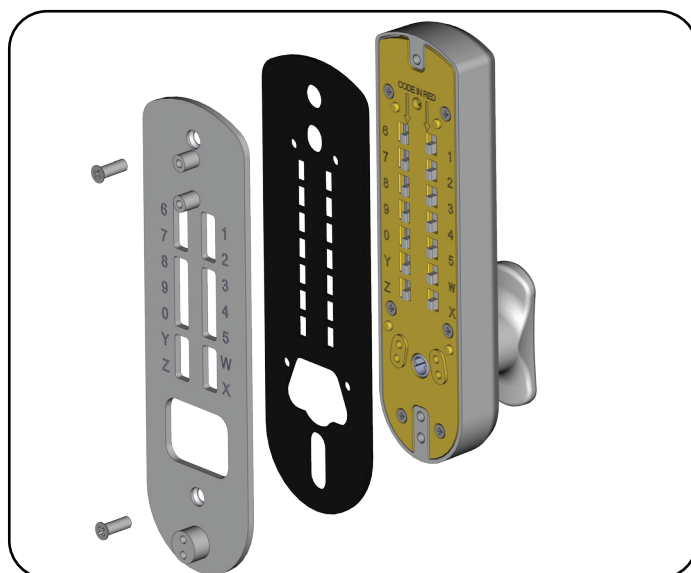
- Internal lever handle assembly with hold back button is sold as a 'spare part' separately. Part number: CDL71-KLSC



- Suits new and retrofit applications. The leverset version and mortice lockset version are supplied with adaptor plates which have the same fitting footprint as the NK2000 and other common digital locksets.



Leverset Version Adaptor Plate



Mortice Lockset Version Adaptor Plate

- Full assembly is over 58mm wide and will cover up standard holes or scratches from previously fitted locks.
- Includes all components and instructions for fitting and combination changing
- This lock has been cycle tested and exceeds 50,000 openings.
- Available in the finish of satin chrome
- The CDL7100 can be fitted on 32mm to 54mm thick doors.