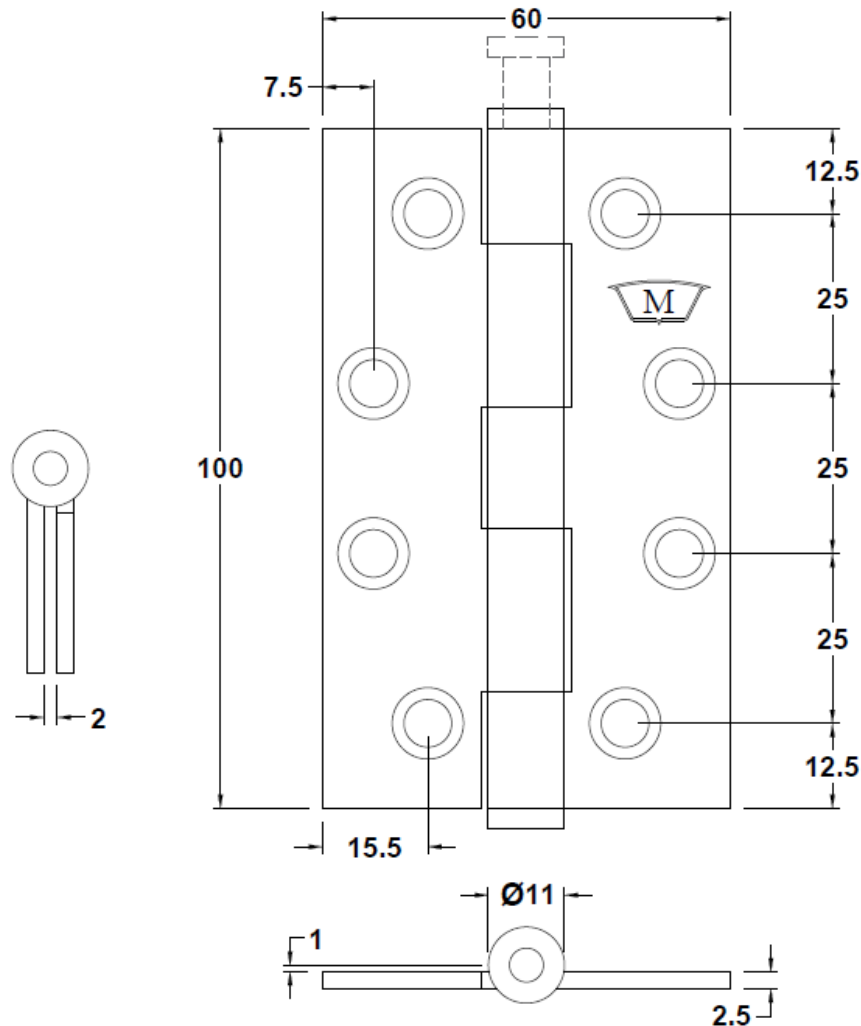


# Technical Data Sheet

## S211 Stainless Steel Butt Hinge 100x60x2.5mm Loose Pin



### SPECIFICATION

- **Hinge Type:** Narrow Butt – Loose Pin
- **Material:** Stainless Steel 304 grade
- **Hinge Pin:** 6.9mm Diameter Stainless Steel 304 grade
- **Bearing:** N/A
- **Knuckle:** Round
- **Endcaps:** Stainless Steel 304 grade Pressed Interference fit
- **Fire Rated:** N/A

### FINISH

- S211SSS – Satin Stainless Steel

### INSTALLATION GUIDE

- Minimum Door Thickness 30mm
- Suitable for Timber doors with Timber or some Metal frames
- As a guide doors:
  - 2040 high x 820 wide – 3 hinges
- Recommended that the minimum of 3 hinges be used with the top hinge located as high as possible

### FIXING

- Fastening screws supplied
- Metal fixings – M5 x 12mm, Countersunk Phillips Stainless Steel metal screw
- Timber Fixings – 8G x 32mm 304SS type AB self-tapping Phillips drive screw