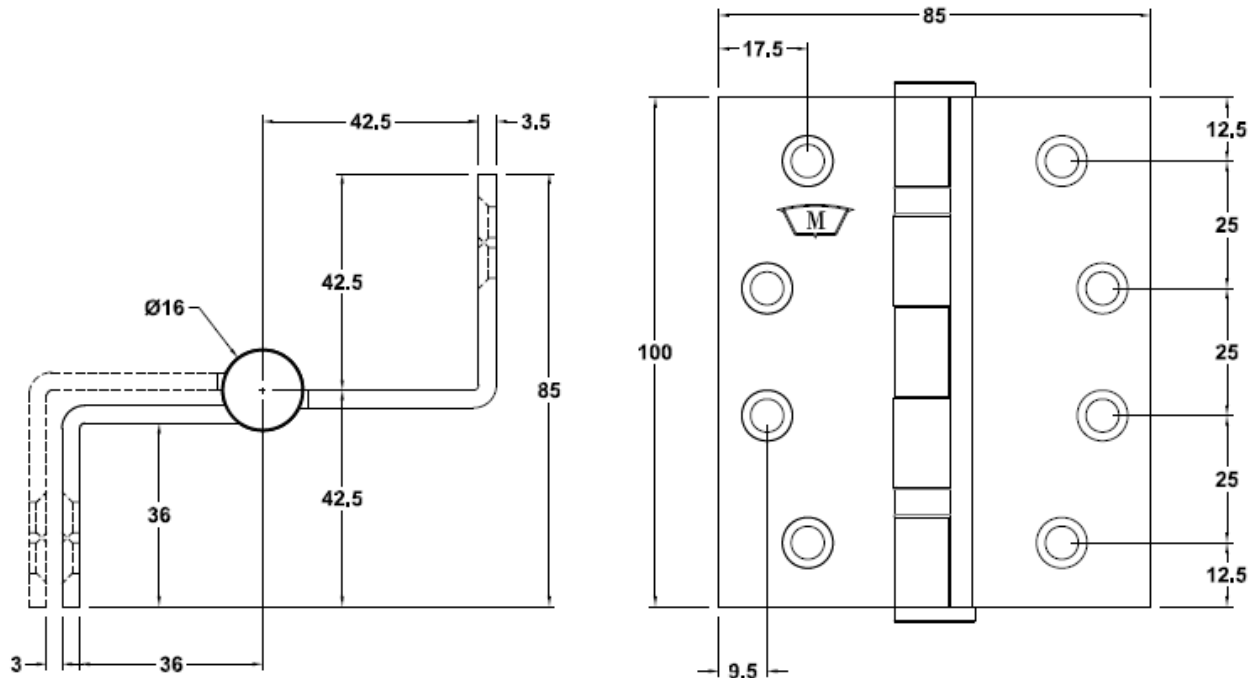


Technical Data Sheet

S271 Stainless Steel Swing Clear “Hospital” Ball Bearing Hinge



SPECIFICATION

- **Hinge Type:** Swing Clear “Hospital” – Fixed Pin
- **Material:** Stainless Steel 304 grade
- **Hinge Pin:** 7.9mm Diameter Stainless Steel 304 grade
- **Bearing:** Stainless Steel – Cage & Bearing
- **Knuckle:** Round
- **Endcaps:** Stainless Steel 304 grade Pressed Interference fit
- **Fixing Holes:** Industry Standard hole pattern to suit pressed metal frames
- **Fire Rated:** N/A

FINISH

- S271SSS – Satin Stainless Steel

INSTALLATION GUIDE

- Minimum Door Thickness 35mm
- Suitable for Timber doors with Timber or Metal frames
- As a guide doors:
 - 2040 high x 820 wide – 3 hinges
- Recommended that the minimum of 3 hinges be used with the top hinge located as high as possible

FIXING

- Fastening screws supplied
- Metal Fixings – M5 x 12mm, Countersunk Phillips Stainless Steel metal screw
- Timber fixings – 10G x 32mm 304SS type AB self-tapping Phillips drive screw