

Please ensure you have received all the correct parts before installation. Mardeco International Ltd takes no responsibility for incorrect product being fitted.

Mardeco International Ltd retains the right to change products and specifications without notice.

Copyright © 2012 Mardeco International Ltd. All rights reserved. For full Terms & Conditions please visit our website.

Mardeco International Ltd.

PO Box 131

Whangaparaoa 0943

Auckland, New Zealand

Phone: +64 (0) 9 428 0658

Email: [info@mardeco.co.nz](mailto:info@mardeco.co.nz)

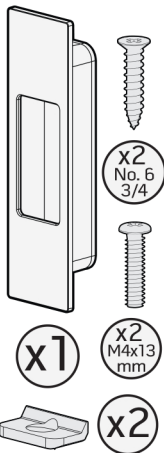
Web: [www.mardeco.co.nz](http://www.mardeco.co.nz)

**mardeco**<sup>®</sup>  
international ltd  
*we handle the best*



Scan QR code to  
view a step by step  
installation video

### Contents Inside Package

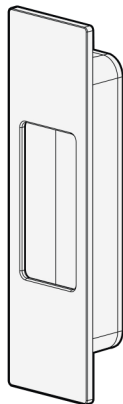


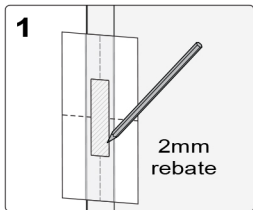
Stainless Steel  
Screws supplied by:

**HECO**<sup>®</sup>  
SCHRAUBEN  
Germany

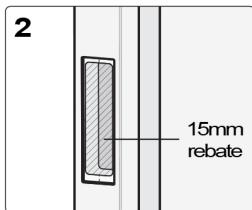


## End Pull Installation Instructions

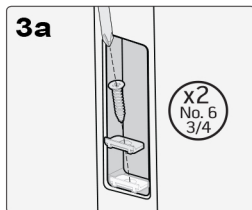




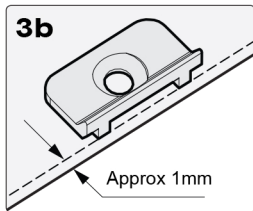
Remove middle section of template and mark rebate outline on end of door. Use midline as height reference. Cut 2mm rebate.



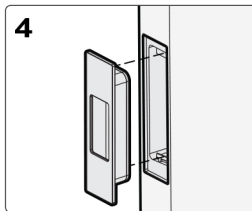
Place middle section of template into rebate and mark 2nd rebate outline. Ensure it is the correct way up. Cut 15mm rebate



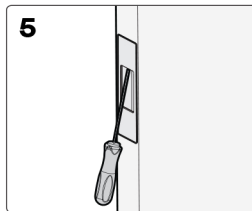
For wooden doors: install two woodfix brackets at top and bottom of 2nd rebate.



Fix brackets in centre of the cutout with the ridge facing outwards. Ensure that they are approx 1mm inside the edge and do not protrude.



Insert end pull into cavity. Push in and down so it grips onto the bottom bracket or edge.



Use Mardeco hex tool to tighten grub screw inside top of end pull. Ensure end pull is fitted firmly.

07 2022 Warranty Statement for Mardeco Kitchen & Cabinet Hardware, Mardeco M-Series and Mardeco S-Line Handrail Brackets.

**10-year GUARANTEE\*:**

The product you have purchased is one of the best you can find on the market.

Mardeco International Ltd. warrants that its products will be free from defects in workmanship and materials for a period of 10 year from the date of purchase subject to the limitations\* below.

If there should be problems with our hardware products, such as defects in material or workmanship, Mardeco International Ltd. will replace the effective product with a new one. To avoid any misunderstanding, we would like to specify that Mardeco International Ltd. only replaces the product and does not cover the cost of removal of the defective product nor its installation.

The warranty of Mardeco International Ltd. does not cover those items which have been incorrectly installed or used for purposes other than that for which they are intended. The item in question should first be returned to our Office/Warehouse or inspected on site by our appointed representative for verification of the fault. With the defective product you should enclose a letter explaining the defect shown by our product Mardeco International Ltd. reserves the right to alter or remove a product, finish or change specification without notice.

This guarantee is in addition to the rights and remedies available to the “Consumer” as defined in the CONSUMER GUARANTEES ACT.

**\*LIMITATIONS:**

Our guarantee specifically excludes the following:

- Electroplated finishes on the products can deteriorate or discolour over time due to climactic conditions and so the warranty for electroplated finishes is limited to **24 months** from the date of purchase.
- Damage caused by accident
- Incorrect Installation
- Neglect
- Fair wear and tear
- Tarnishing or deterioration of the decorative finish
- Rubber items from perishing

## SPECIAL PRODUCTS:

All products imported or manufactured at the customer requests which are Non-standard in design, size or finish will NOT be accepted for return except where such product is faulty in workmanship or specification. On acceptance of your order no cancellation of your order will be allowed if manufacturing has started, or materials/products ordered.

## MARINE:

These products have NOT been designed specifically for marine applications and as such it is incumbent on the purchaser to ensure their suitability.