

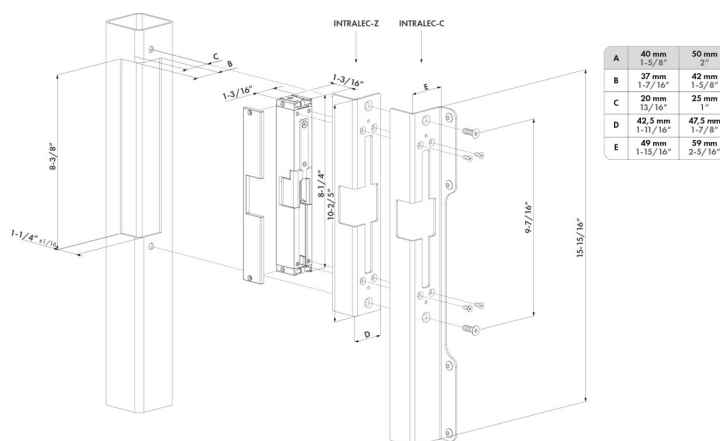
For insert locks

INTRALEC



<https://www.locinoxusa.com/gate-hardware/keeps/for-insert-locks/d0000052>

Elegant and discreet electric keep which is built-in the post. Easy installation thanks to the patented Click-It system. Can be installed without a strike plate and a mechanical override is possible. Intralec is available in Fail Open (Ruptura) and Fail Close (Emissa) version.



TECHNICAL SPECIFICATIONS

Left-Right Adjustability	Yes
Installation Method	
Operating Voltage	12V AC/DC 24V AC/DC
Operating Current	0.4A @ 24V 0.8A @ 12V
Power	9.6W
Gate Profile	1-9/16 in; 2 in
Minimal Distance Gate - Post	3/8 in
IP Rating	54
Materials Main Part(s)	Anodised Aluminium Resin Encapsulated PCB Stainless Steel
Hours of Salt Spray Testing	500
Test Frequency	500000
Years of Warranty	2