

Threshold Plates



RP77



A heavy duty threshold ramp with a ribbed design which can be positioned back-to-back to form a two-way threshold ramp conforming to NCC D3D16 (b).

Can be used in conjunction with Raven door bottom seals to prevent rain, draughts, noise and smoke infiltration. Suitable for use with most floor pivots.

Ideal for commercial shop fronts providing a neat ramp detail between carpets or tiles at door ways.

Can also be used to provide a ramped frame for internal door mats.

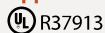
Location: Door sill.

Finish:* Satin clear (silver), bronze or black anodised aluminium (25µm).

Fixing: Screw fix. Zinc plated, cross recess head CSK S.T. screws supplied.

Sizes: Available in stock lengths. Specify longer length than doorway to allow for neat installation around door frame.

Approvals



ANSI/BHMA A156.21

Access & Mobility AUS/NZ: NCC D3D16 & D4D4. AS1428.1:2009 Part 10.5. AS1428.1:2021 Part 7.5. NZBC D1/AS1 1.3.2.

UK/EU: Approved Document M.

Fire AUS/NZ: NCC S12C2. AS1530.4 & AS 1905.1. NZBC C/AS2 4.16.2(a) & App C6.1.1.

UK/EU: Approved Document B. BS 476 Pt. 20 & 22 (similar to BS EN 1634-1).

Up to FRL / FRR-240/30.

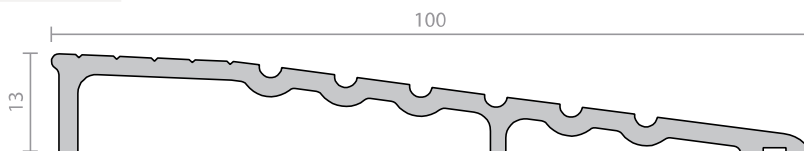
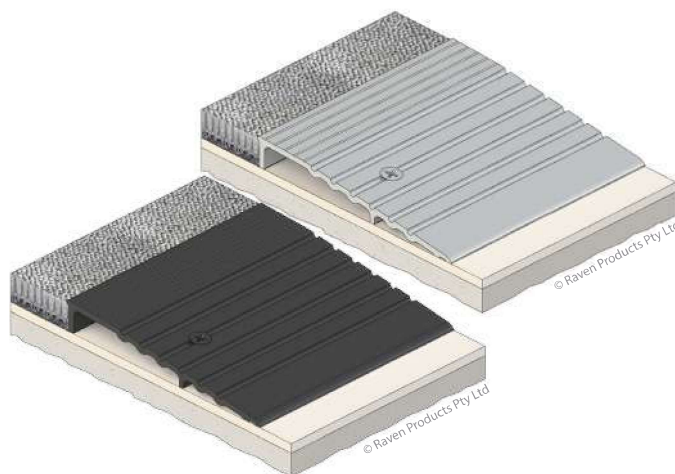
BAL FZ when used with a BAL rated door bottom seal in accordance with AS 3959.

Certification

Global GreenTag Cert™

Product Health Declaration™ (GreenTag PHD™)

PlatinumHEALTH™ HealthRATE™



*Note: Not all finishes are available in all sizes.

RP82



A low profile threshold plate that is ideal for use in conjunction with Raven door bottom seals to prevent rain, draughts, noise and smoke infiltration.

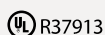
Location: Door sill.

Finish:* Satin clear (silver) or bronze anodised aluminium (25µm).

Fixing: Screw fix or builders adhesive for concealed fixing (user determined). Colour matched zinc plated, cross recess head CSK S.T. screws supplied.

Sizes: Available in stock lengths.

Approvals



ANSI/BHMA A156.21

Access & Mobility AUS/NZ: NCC D3D16 & D4D4. AS1428.1:2009 Part 7.2. AS1428.1:2021 Part 4.2. NZBC D1/AS1 1.3.2.

UK/EU: Approved Document M.

Fire AUS/NZ: NCC S12C2. AS1530.4 & AS 1905.1. NZBC C/AS2 4.16.2(a) & App C6.1.1.

UK/EU: Approved Document B. BS 476 Pt. 20 & 22 (similar to BS EN 1634-1).

Up to FRL / FRR-240/30.

BAL FZ when used with a BAL rated door bottom seal in accordance with AS 3959.

Certification

Global GreenTag Cert™

Product Health Declaration™ (GreenTag PHD™)

PlatinumHEALTH™ HealthRATE™

