

Austyle Digital Smart Lock



Black 59413



Silver /White 89413

59413 / 89413

INSTALLATION INSTRUCTIONS

V.0125

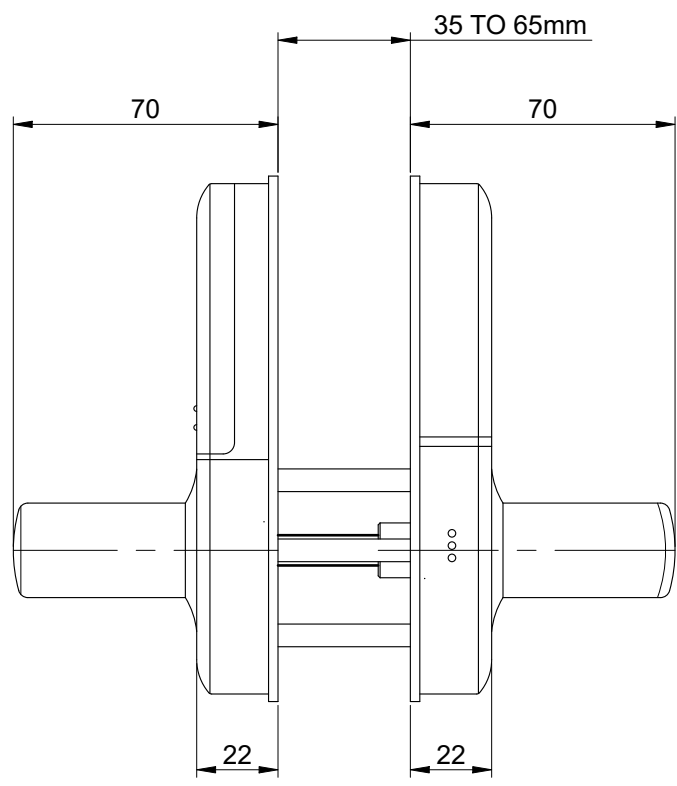
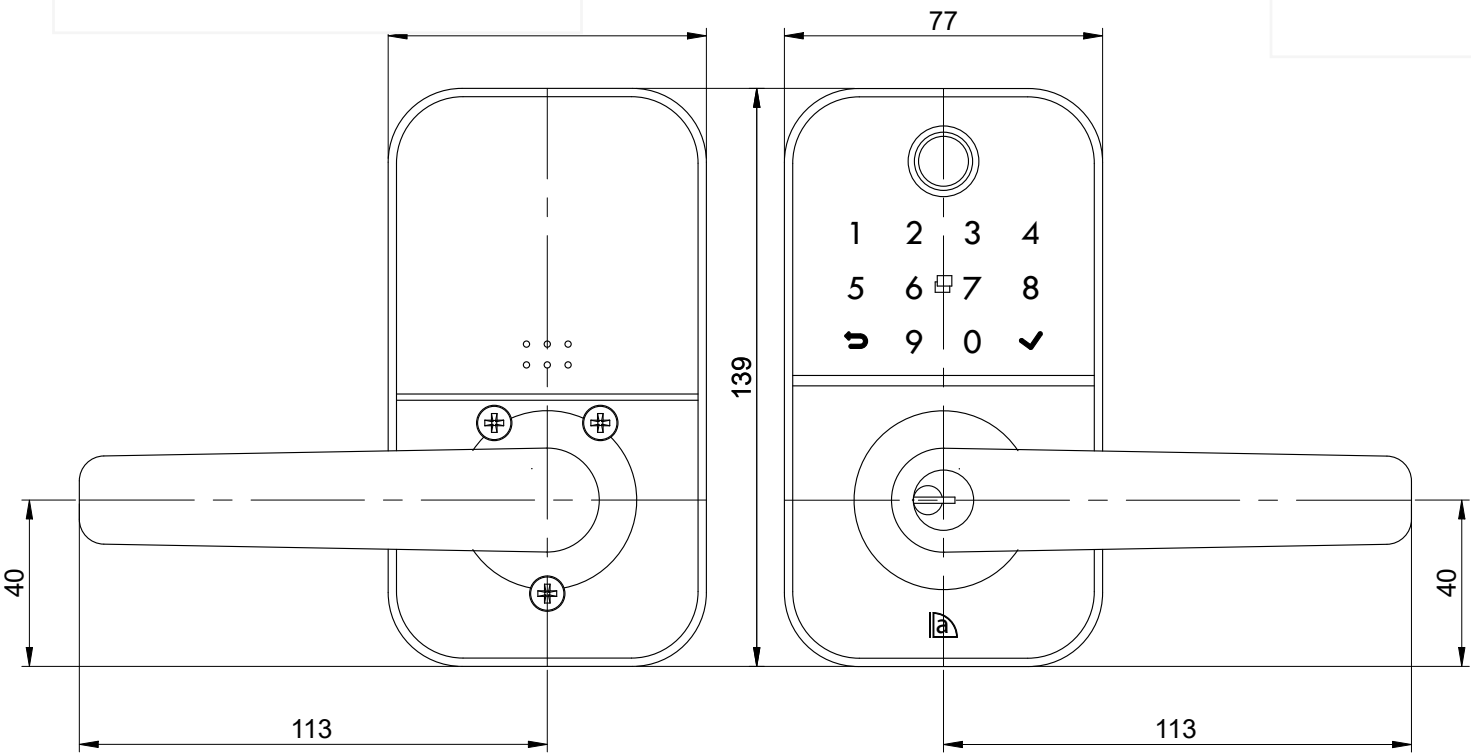
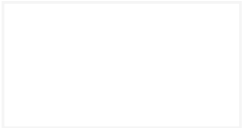
Introduction

Thank you for choosing the Austyle digital smart lock. This lock is designed for residential use only. The one-year (mechanical and electronic) warranty applies only to locks used in residential installations.

To ensure you get the best out of your purchase, please follow the guidelines below:

- Please read these instructions fully before installing this lock.
- We recommend that this lock be installed by a professional installer or a competent DIYer to ensure correct installation and operation.
- This digital smart lock requires installation on a smooth, flat surface to maintain its water tightness. It is not suitable for use on a tongue-and-groove door, as water can penetrate the lock through the groove.
- We recommend that this lock never be fully exposed to direct weather for extended periods. For long-lasting functionality, position the lock under an eave or in a sheltered area, away from direct sunlight and rain.
- The exterior of the lock is rated IP55. No warranty is provided for damage caused by water entering from the inside of the door.
- This lock is not suitable for use on a gate.
- This lock comes with a mechanical key override that can be used in case of battery loss. We recommend keeping the override key in a safe location outside in case this situation occurs.
- Replace the batteries when the app indicates low voltage.
- All batteries used with this lock must be high-quality alkaline (4 x AA batteries) to ensure the electronic components function smoothly and consistently. We recommend Energizer Max Plus alkaline batteries.
- Lithium or rechargeable batteries cannot be used with this lock.

Lock Dimensions



Packing List



- **Exterior panel**
Qty x1



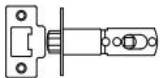
- **Interior panel**
Qty x1



- **User manual**
Qty x1



- **Installation template**
Qty x1



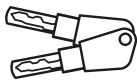
- **latch**
Qty x1



- **RFID Tag**
Qty x3



- **Self adhesive disc**
Sold separately



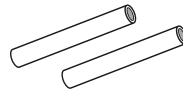
- **Mechanical keys**
Qty x 2



- **Rubber gasket**
Qty x2 -
Inner & Outer



- **Pin x 1 - for resetting**



- **Locations Pins x2**
35mm



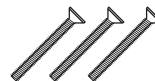
- **Screw #8x 25mm Qty x 4**



- **Allen Key x1**



- **Screw x3**
M4 x 65mm



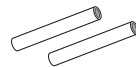
- **Screw x3**
M4 x 45mm



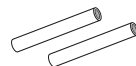
- **Spindle 60mm**



- **Spindle 75mm**



- **Threaded Sleeve x 3**
M4 x 35mm



- **Threaded Sleeve x 3**
M4 x 30mm



- **WiFi hub**
Qty x1 (optional)

Product specifications:

Model number	59413 (Black) / 89413 (Silver White)	Door thickness range	35mm - 65mm
Material of Manufacture	Aluminum alloy	Low voltage Alarm	Less than 4.8 Volts
Weight	2 kg	Type of use	Residential use only
Options of unlocking	Bluetooth Password Card Fingerprints Mechanical key Gateway(option)	Passcode capacity	App unlocks Passcodes: 150 max RFID Cards: 200 max Fingerprints: 200 max
Working temperature	-10 to + 55 degrees C	Working Humidity	0-95%
Normal voltage	6 volts (4 x Alkaline batteries)	Warranty	1 year mechanical
			1 year electronic

Anti Peeping Technology

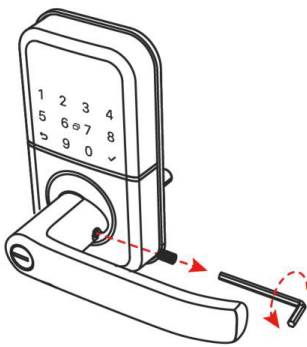
This lock offers anti-peeping virtual passcode entry by inputting a random passcode either before or after the proper passcode followed by the # key.

Installation:

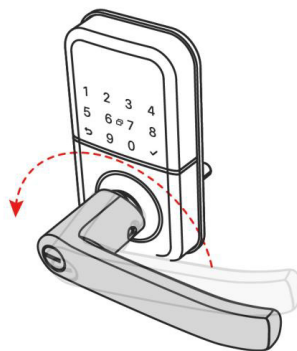
Notice: Adjust the handle according to the direction you open the door.

The door opens to the left, with the handle facing left. The door opens to the right, with the handle facing right.

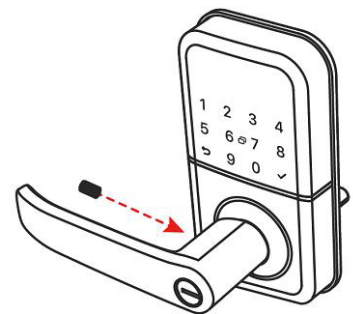
For Exterior Panel:



1. Loosen the screw

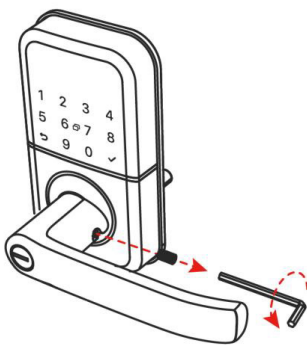


2. Adjust the direction of the handle

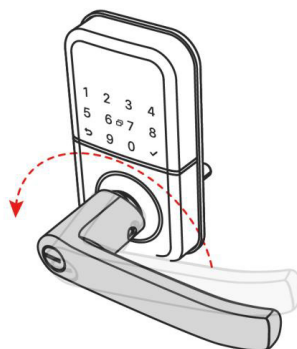


3. Tighten the screw

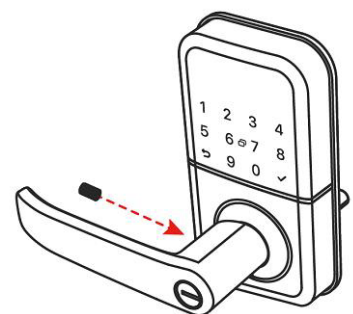
For Interior Panel:



1. Loosen the screw



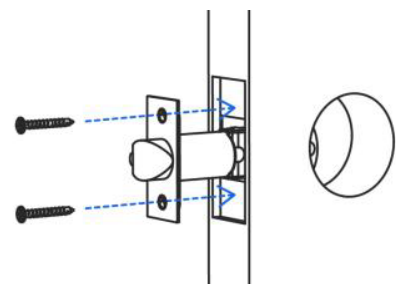
2. Adjust the direction of the handle



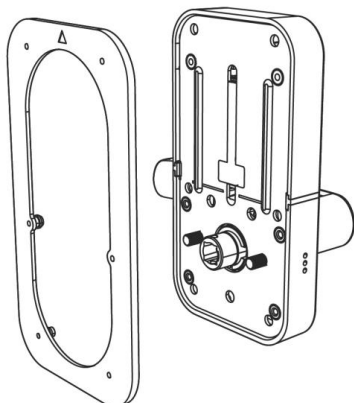
3. Tighten the screw

Step 1: Install Latch

1. Mark and crop door using installation template provided
2. Ensure holes are clear of any sharp edges and clean of swarf and wood dust.
3. Install the latch into the door with screws



1.



Step 2: Install Exterior Panel

1. Attach the Rubber gasket: Place the rubber gasket on the exterior panel, making sure it fits flat and into the correct holes.

2. Choose the Spindle Length:

For doors 35mm – 48mm thick, use the 60mm spindle.

For doors 48mm – 65mm thick, use the 75mm spindle.

Ensure the spindle clips securely into the panel. fig2.

3. Screw in Location Pins: Attach the two location pins on each side of the spindle, tightening them well.

4. Install Screw Stubs:

For doors 35mm – 48mm thick, use 30mm stubs.

For doors 48mm – 65mm thick, use 35mm stubs.

Tighten stubs with a crescent wrench.

5. Mount the Exterior Panel: Align the exterior panel over the latch in the door, ensuring the power cable is above the latch. Check that the spindle and location pins fit correctly.

Important: The spindle should not stick out more than 30mm from the door's inside face. If it does, switch to the shorter spindle.

2.

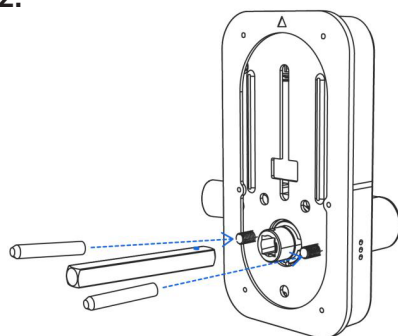
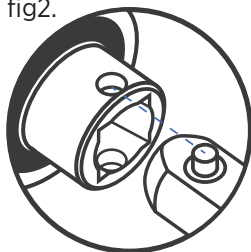
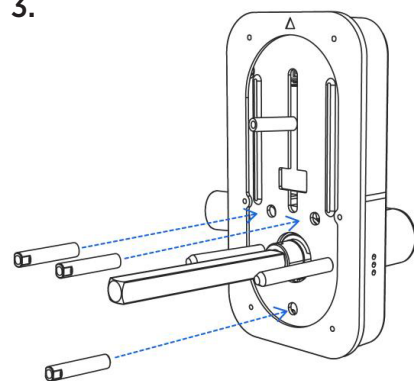


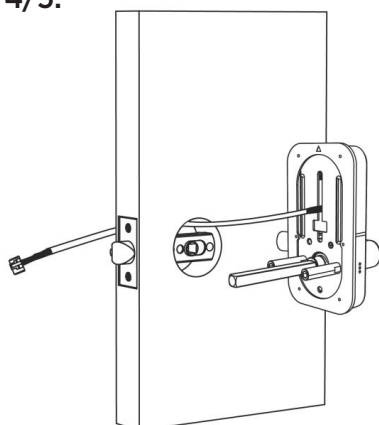
fig2.



3.



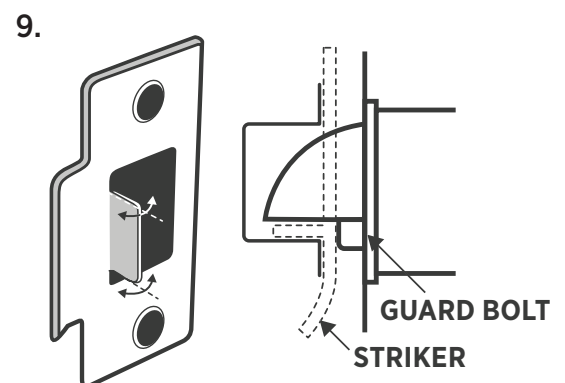
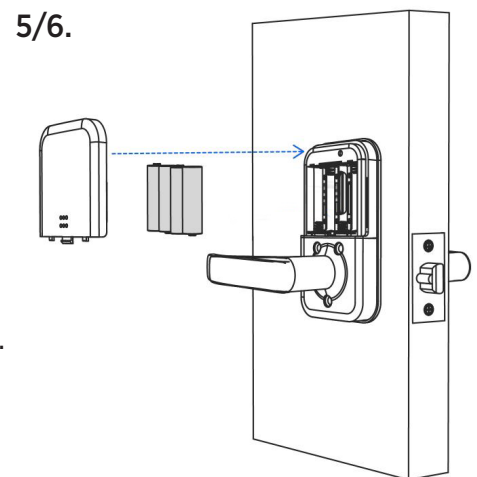
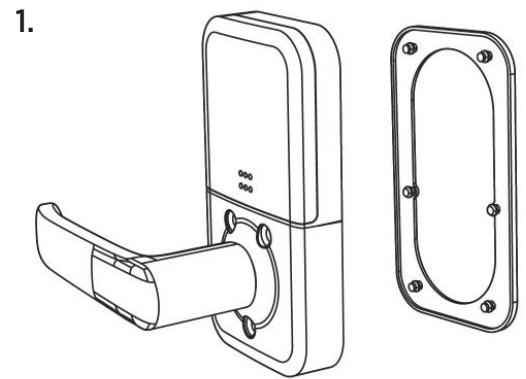
4/5.



INSTALLATION INSTRUCTIONS

Step 3: Install Interior Panel

1. **Attach the Rubber Gasket:** Secure the rubber gasket to the interior panel, ensuring it fits flat in the seal slot.
2. **Connect the Power Cable:** Plug the wire into the receiving socket, making sure it's oriented correctly.
Important: To remove the panel, press the clip on the plug before pulling it out to avoid damage.
3. **Secure the Panel:**
Use the appropriate screws:
For doors 35mm – 48mm thick,
use 3 x F screws (45mm).
For doors 48mm – 65mm thick,
use 3 x G screws (65mm).
Make sure the power cable isn't pinched against the door.
4. **Cover the Screws:** Once everything is in place, stick 3 self-adhesive buttons over the fixing screws.
5. **Install Batteries:** Insert 4 high-quality AA alkaline batteries (we recommend Energizer Max Plus for longer life).
6. **Add the Battery Cover:** Secure the battery cover.
7. **Mark the Striker Plate Position:** Locate and mark where the striker plate and box should go, centering them in the frame.
8. **Chisel the Frame:** Create space in the frame for the striker box and plate.
9. **Adjust the Anti-Rattle Tongue:** Ensure the latch fits properly into the striker plate when the door is closed. Making sure the guard bolt is correctly positioned.
10. **Completion:** The mechanical installation is now complete.



Lock Installation Checklist

1. Holes drilled and aligned as per installation template.
2. Ensure the rubber gasket is aligned correctly with a good seal on the door, also making sure the lugs are correctly seated in their holes .
3. Ensure all screws and bolts are correctly tightened.
4. Ensure power cable is installed and not bent or crimped in door.
5. Check batteries are Alkaline and installed correctly.
6. Check to see if the lock requires a software update via the TTLock App



1. Date Installed: / /
 2. Installed By:
 3. Pin: #
-

Manual reset to factory settings:

If you are not administrator of the Smart Lock, remove battery cover and complete as follows:

1. Long press the reset button beneath the battery cover for 5 seconds or until you hear: "Please Input Initialisation Passcode".
2. Input code "000#" on the keypad.

The system reset will be complete. From here you can re-link the Smart Lock to your phone via the TT Lock App.



**Note: this will clear all previous users from the locks memory*

Using your Austyle Smart Lock

This Smart Lock has a mechanical key override to unlock it.
The key location is on the front panel.

Insert one of the included keys, turn to unlock.



C4 AUSTRALIAN
STANDARD PROFILE
MECHANICAL
KEY OVERRIDE

Maintenance Guide:

Maintenance should be carried out on your lock every 6 months:

- Check that the screws fixing the mortise Lock are tight.
Check that the screws fixing the interior panel to the exterior panel are tight.
- Check if batteries need replacing. If battery percentage is low replace with four fresh Alkaline 1.5V AA batteries. We recommend Energizer Max Plus Alkaline Batteries.
- Wipe the surface of the Lock with a damp cloth, we recommend only water is used.
This will help remove any dust or micro contaminants from the surface.
- Check rubber gasket to ensure the seal between lock and door is still good.

TTLock App Set-up instructions:

1. Download app

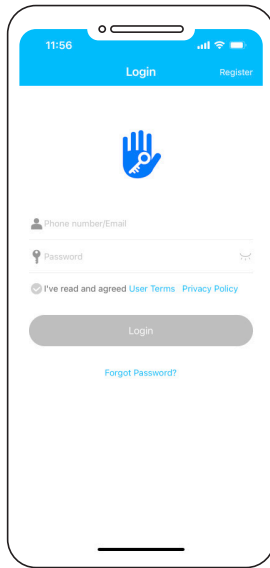
- Download the TTlock app onto your device
- Through Apple (IOS version) use app store to download TTlock
- Through Android version go through Google play (English version)

Otherwise use the below QR codes

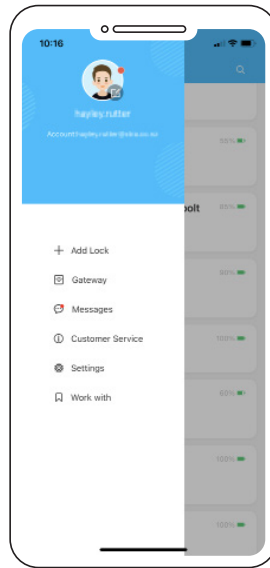


TTlock App

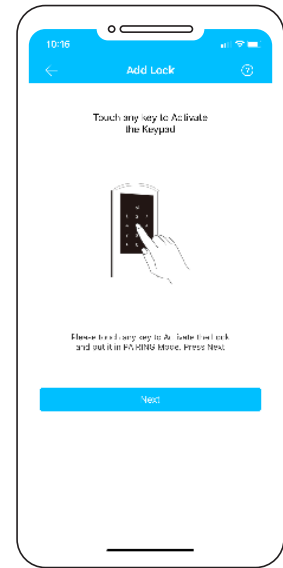
- TTlock supports multiple types of locks and devices
- TTlock currently supports 200 countries
- Verification codes will be sent to users' mobile phone or email depending on how you have registered above.



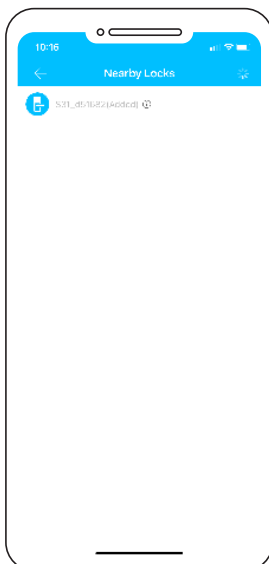
1. Register a new account (phone number or email) or login with an existing account if you already have one.



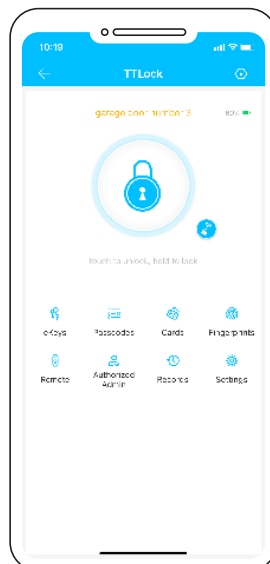
2. With App open touch on main screen + Add lock



3. Hold the phone in close proximity to the lock (and with four good-quality AA alkaline batteries installed in the lock). Wake the lock up by touching the keypad.
4. Your lock will appear on the screen, then click +



5. Rename the lock. e.g. home front door
6. The lock is now successfully added to the app.



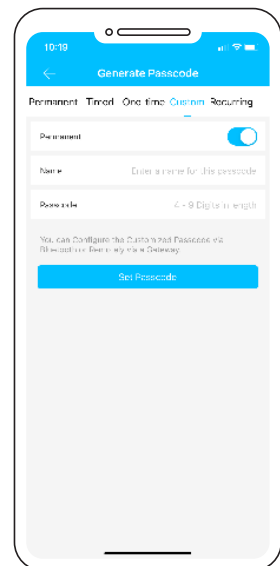
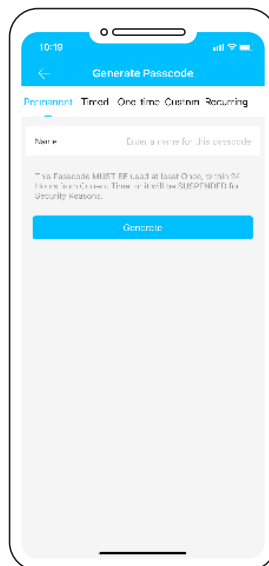
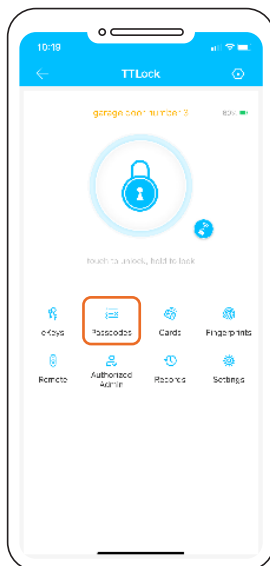
7. If you have downloaded the app and loaded your lock on your device you are now the administrator of this lock, from here you can now add or delete users / passcodes / RFID card etc.

Management of app and lock

Bluetooth (lock and unlock)

- Make sure your phone has bluetooth is switched on your phone
- The app can be used to lock or unlock the door by using bluetooth within a 5m range.
- Note: the lock will automatically re-lock itself depending on the setup of the auto lock function through the app.
- From the app push the (padlock) symbol to lock or unlock the device.
- Note: 5-meter Bluetooth range can vary depending on interference such as steel, thick walls and micro wave interference etc.

Setting a passcode:

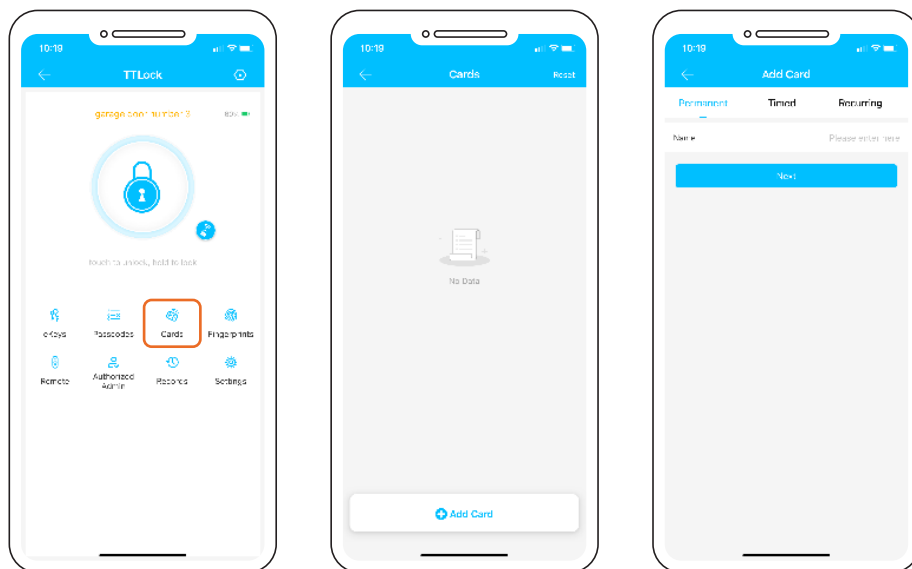


- Passcodes are another way of unlocking the device
- This lock can accept up to 150 unique Passcodes.
- Careful consideration should be taken to ensure each Passcode is set up in a way that they can be well managed at a later time. We suggest naming each PIN with the name of the person using it.
E.g. Bobs PIN
- We suggest when setting up passcodes to do it via the custom setting to create your own pin number. It needs to be between 4-9 digits followed by '✓' e.g. 1234✓.
- Recurring Passcodes used to give access to the user of this code at certain time of day and week.
- You can also set up Passcodes for One timed and also timed access (for example a tradesperson working in your house for a short period of time).

INSTALLATION INSTRUCTIONS

RFID cards

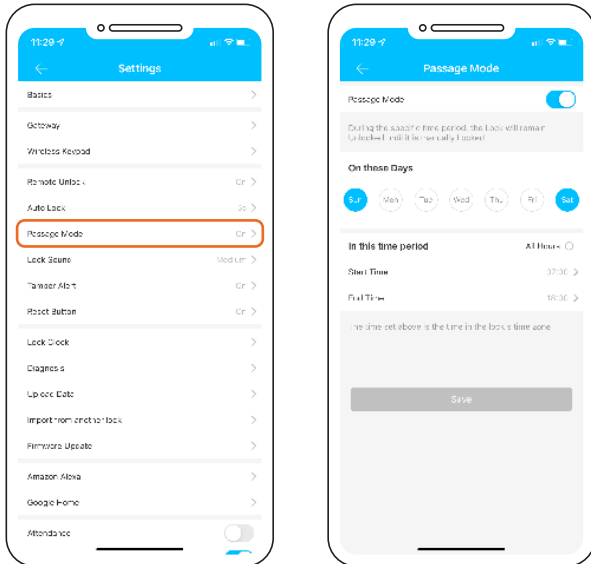
- This lock comes with three RFID cards and can store up to 200 unique RFID cards.



- To add these to the lock, touch RF Cards, then add card
- Decide if a Permanent or Timed or Recurring user
- Name the Card (we suggest the users name) e.g. Bobs RFID
- Then touch card against keypad to accept card to lock

Passage mode

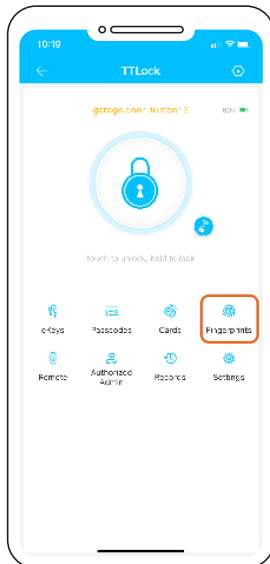
- The TT app can be used to put the lock into passage mode. NB: Passage mode is where the lock can be opened without a passcode etc



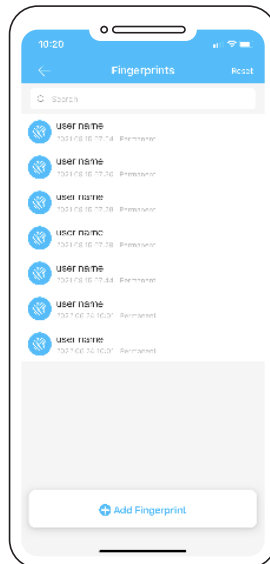
- Under the setting tab of the lock, you can switch passage mode on or off
- You can also set up a calendar so that the lock can go into passage mode on certain days at certain times.
- Note for security reasons the passage mode only starts once a successful entry to unlock the lock has been accepted.
- To lock the door when in passage mode, press and hold the ✓ key on the lock.**

Finger Prints

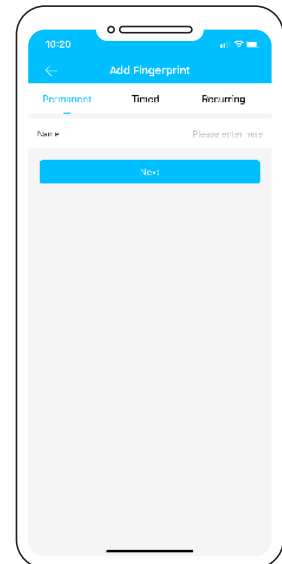
- This lock can accept up to 200 unique finger prints



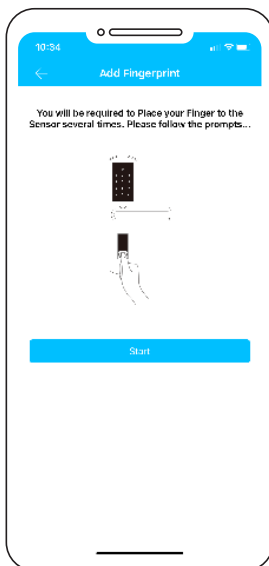
1. From main screen click on Finger print



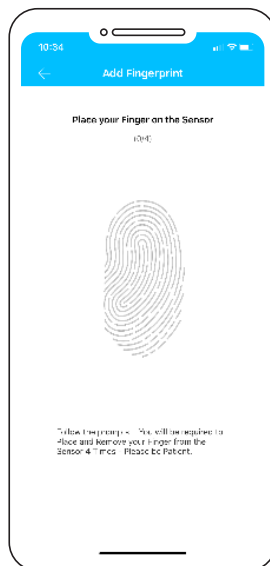
2. Then add finger print
3. Decide if a Permanent, Timed or Recurring user



4. Name the finger print (we suggest the users name) eg Bobs Finger



5. The app then prompts you to present your finger or thumb to the reader.
6. Watch and listen to the prompt of the app and lock you will see the image



7. You will be asked to do this a number of times until all parts of the image on the app turn from black to blue.

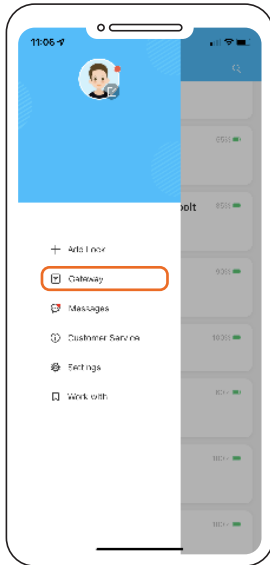


8. We suggest for convenience and user speed to save your finger print in a number of different positions. EG Bobs 1 finger, Bobs 2 finger etc.

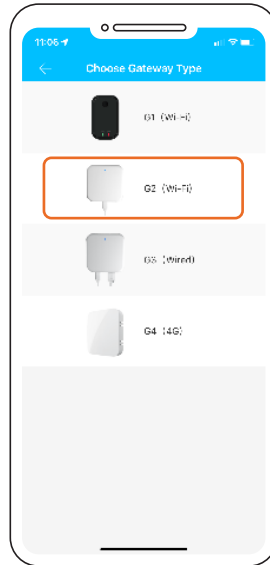
INSTALLATION INSTRUCTIONS

Remote unlock

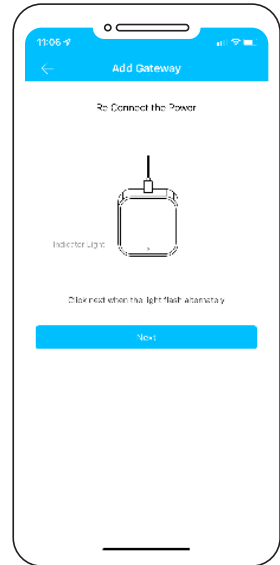
- This can be done using a WiFi hub 59419 (sold separately)



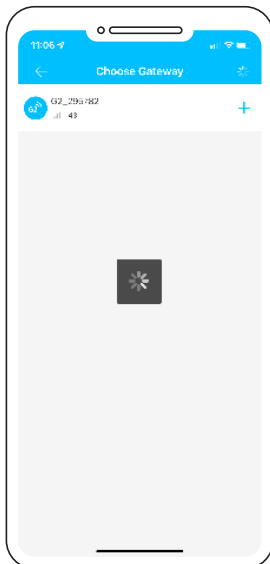
1. Add the smart hub via the first screen of the TTlock app



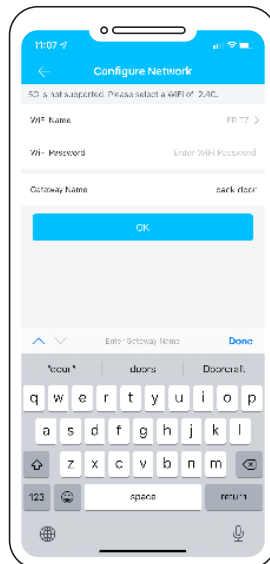
2. Click on add Gateway
3. Choose the G2 (Wi-Fi) option



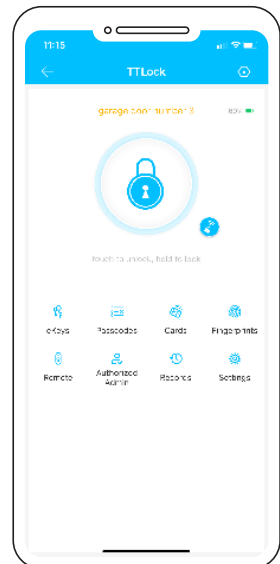
4. Connect power to the gateway and the indicator light will flash red, it's now in programming mode



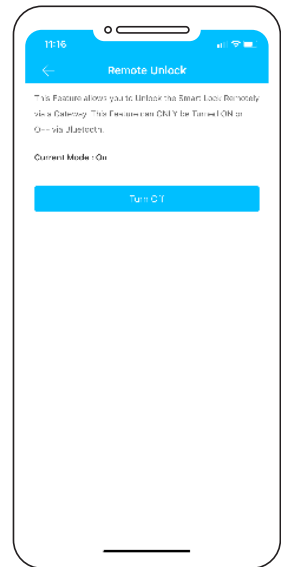
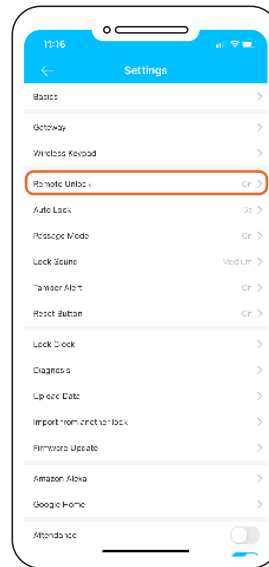
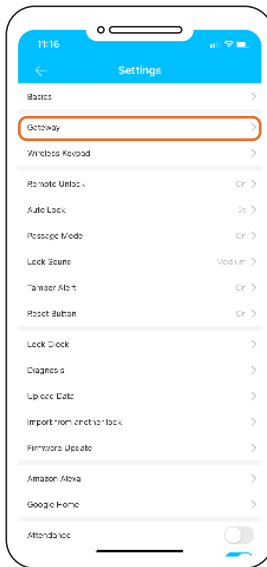
5. Click next
6. Once seen it will ask for you to name the gateway e.g. (garage door gate way)



7. It will also ask for your Wi-Fi password (Note this needs to be a 2.4G) signal. 5G is not supported
8. Then the gateway is connected.

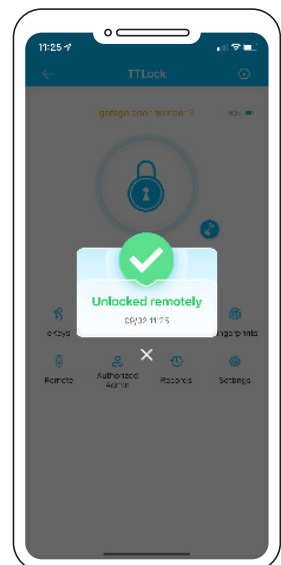
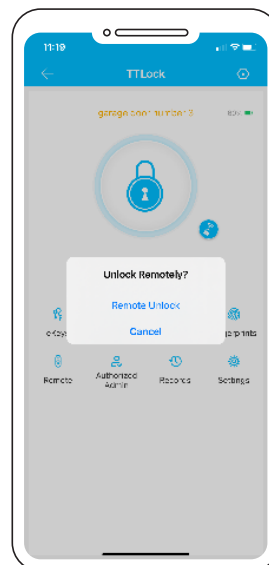
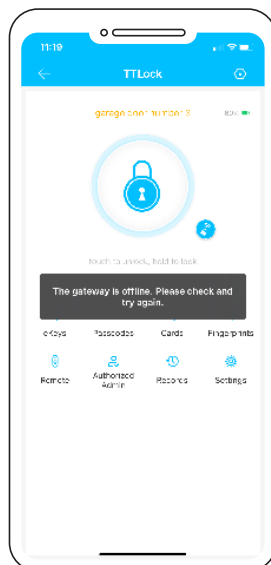
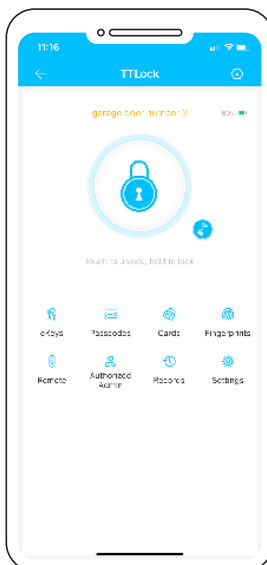


9. Check that the gateway is online under the gateway link off the front page
10. Ensure the gateway is within 10 meters of the lock



11. In the setting screen of the lock click on gateway and you should see your named gateway.

12. On the settings page select 'Turn on Remote Lock'.



13. On the main programming screen of the lock a small WiFi symbol now appear next to the padlock symbol of the app.

14. By clicking on the WiFi symbol, then clicking Remote unlock you will then be able to remotely unlock your lock from anywhere using the secure WiFi connection.

15. The app will show when the lock has been successfully unlocked.



PRODUCT WARRANTY

Customer Name: _____

Customer Phone: _____

Purchase Date: _____

Store name: _____

Receipt #: _____

Product Name: _____

Product Model: _____

Note: _____

Note:

1. Please keep this card so that you can use it when you need warranty service.

2. We provide you with a one-year warranty from the date of purchase.



137-145 Chesterville Rd
Moorabbin VIC 3189
Australia
Ph: +61 3 9533 3599
Email: info@austyle.com.au
Web: www.austyle.com.au