

# PHOENIX COMMERCIAL

## LEVER SETS

### FEATURES:

- Suitable for 35~50mm thick doors
- 70mm backset as standard
- Lever - Zinc Alloy
- Knob - Brass SCP
- Chassis - Steel
- Stainless Steel Latchbolt
- Stainless Steel T Strike Plate
- C4, 6 pin keyway
- Restricted keying compatible
- Fire tested to AS 1530.4-2014
- Complies with AS 1428.1-2009
- 400,000 cycle tested

#### Entrance



**OUTSIDE:** Locked by pushing inside button. Turning key releases inside button leaving lever unlocked

**INSIDE:** Lever is always free for exit

#### Privacy



**OUTSIDE:** Locked by pushing inside button. Emergency tool, screwdriver or coin inserted into outside slot & turning to release button, leaving lever unlocked. Anti-lockout "kick-off" as standard

**INSIDE:** Lever is always free for exit

#### Classroom



**OUTSIDE:** Key locks & unlocks outside lever only

**INSIDE:** Lever is always free for exit

#### Communicating



**OUTSIDE:** Key locks & unlocks both sides

**INSIDE:** Key locks & unlocks both sides

#### Storeroom Knob / Lever



**OUTSIDE:** Rigid knob at all times. Key retracts latch only

**INSIDE:** Lever is always free for exit

#### Storeroom



**OUTSIDE:** Rigid lever at all times. Key retracts latch only

**INSIDE:** Lever is always free for exit

#### Passage



**OUTSIDE:** Lever is always free

**INSIDE:** Lever is always free

#### Vestibule



**OUTSIDE:** Rigid lever at all times. Key retracts latch only

**INSIDE:** Rigid lever at all times. Key retracts latch only

#### Escape / Half Set



**OUTSIDE:** Blank plate

**INSIDE:** Lever is always free for exit

#### Entrance Knob / Lever



**OUTSIDE:** Locked by pushing inside button. Turning key releases inside button leaving knob unlocked

**INSIDE:** Lever is always free for exit



## PHOENIX COMMERCIAL

LEVER SETS

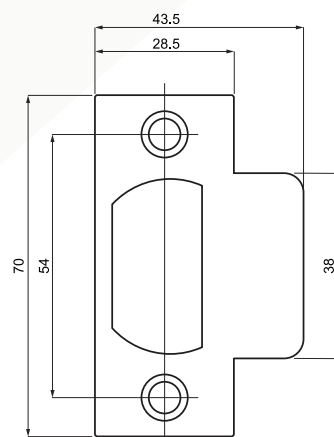
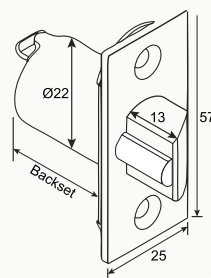
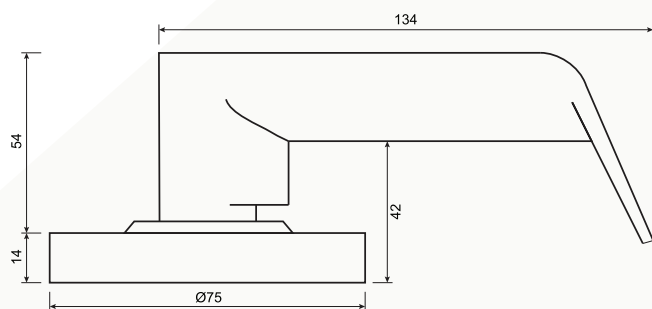
### PRODUCT CODES:

11019.SC	(CL8082D-SC) Phoenix Fire Rated Lever Passage Set
11021.SC	(CL8030D-SC) Phoenix Fire Rated Lever Privacy Set
11020.SC	(CL8000D-SC) Phoenix Fire Rated Lever Entrance Set
11022.SC	(CL8052D-SC) Phoenix Fire Rated Lever Escape / Half Set
11023.SC	(CL8012D-SC) Phoenix Fire Rated Lever Classroom Set
11024.SC	(CL8062D-SC) Phoenix Fire Rated Lever Storeroom Set
11025.SC	(CL8095D-SC) Phoenix Fire Rated Lever Double Vestibule Set
11026.SC	(CL8011D-SC) Phoenix Fire Rated Lever Double Communicating Set

### FINISHES:

Satin Chrome & Matt Black
Satin Chrome & Matt Black
Satin Chrome & Matt Black
Satin Chrome
Satin Chrome & Matt Black
Satin Chrome & Matt Black
Satin Chrome & Matt Black
Satin Chrome & Matt Black

### DIMENSIONS



*Note: Measurements are in mm*

