

# SLIDING DOOR HARDWARE

## FLUSH PULLS



**5228**  
120 x 40mm  
11mm depth  
SS



**5241**  
120 x 40mm  
11mm depth  
SS



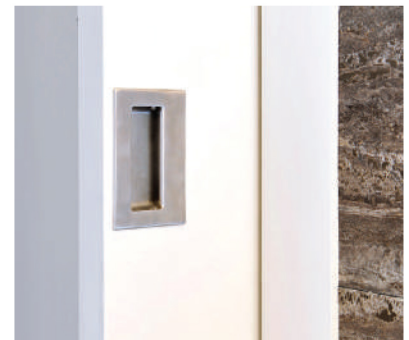
**5242**  
102 x 51mm  
11mm depth  
SS



**5257**  
128 x 83mm  
18mm depth  
SS



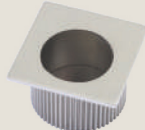
**5182**  
102 x 50mm  
14mm depth  
SC, PB



## EDGE PULLS



**8088**  
**Round Style**  
29mm diameter  
BN, SC & PB



**5333**  
**Square Style**  
29 x 29mm  
SS



**5259**  
**Square Style**  
100 x 20mm  
SS, BLK



**5267**  
**Oval Style**  
120 x 51mm  
SS

## FLUSH RINGS

• Finishers: SC, PB



**5177** | 40 x 33mm  
**5154** | 50 x 37mm  
**5155** | 63 x 50mm

## FLUSH PULL KITS

• Kits include 2 x flush pulls and a matching edge pull

**5261**  
**Square Style**  
102 x 51mm  
SS



• Also available as lock kits

**5260**  
**Oval Style**  
120 x 20mm  
SS



• Also available as lock kits



## ITALIAN RANGE

### 8106 Privcy Kit

- Turn, Escape, edge Pull, Privacy mortice lock, 55mm basket
- Suits 34+mm doors. Countersunk flush pulls allow doors to fully recess inside cavity.
- Finisher: BN, SC, TG

### 8107 Flush Pull Kit

- 29mm Edge Pull
- 55x11mm Flush Pulls
- Finisher: BN, SC, TG

