



VISCA CAVITY SLIDING KITS



Description:

- This product is made of solid brass, manufactured in Europe, making it of the finest quality.
- Suits 36+mm doors
- Countersunk Flush Pulls allow doors to fully recess inside cavity

Components:

- 2x55mm diameter flush pulls
- Privacy mortice lock
- Complimentary edge pull. The edge pull allows you to pull the door out of the cavity when it is fully recessed in.

Finishes:

Satin Chrome

Brushed Nickel

Graphite Nickel (8107)

Matt Black (8107)

Satin Brass (8107)

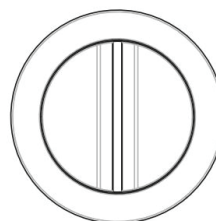
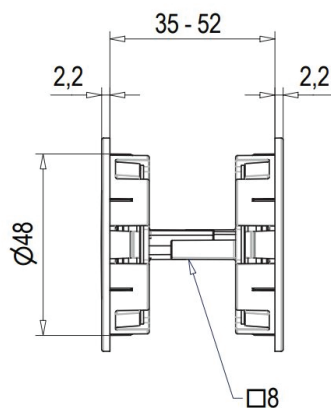
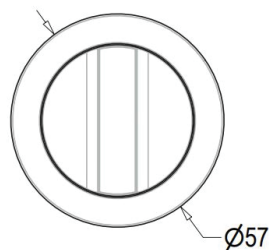
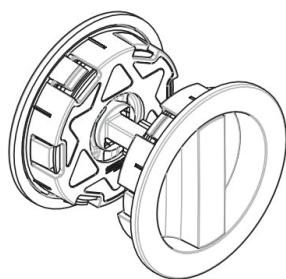
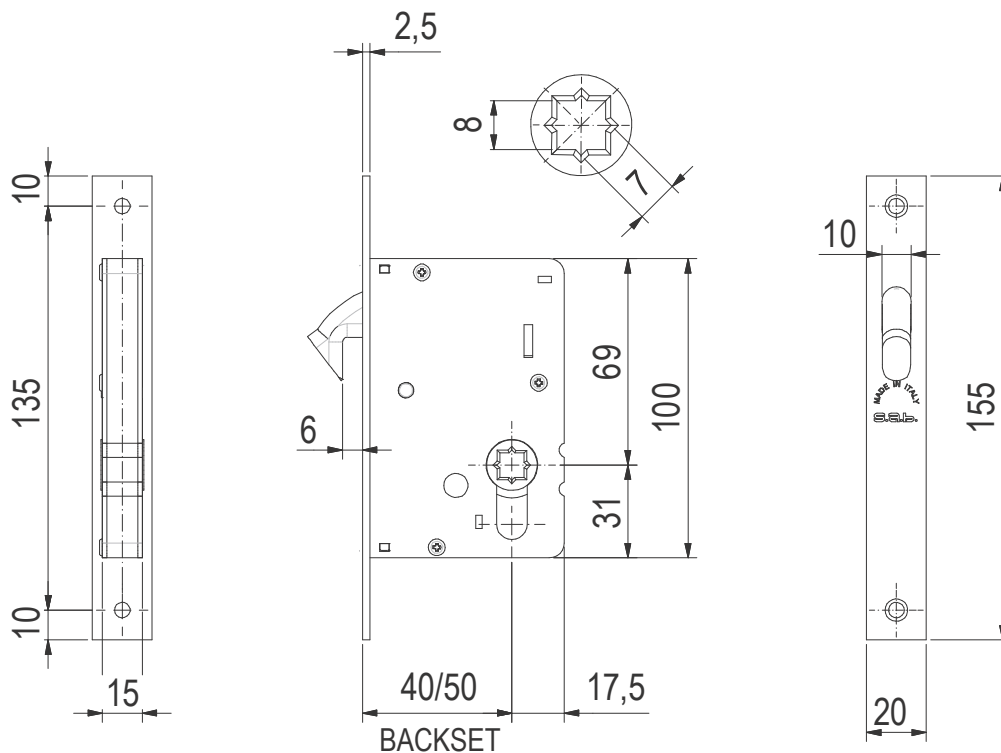
Note: Measurements are in mm

1 300 926 321 

sales@zanda.com.au 

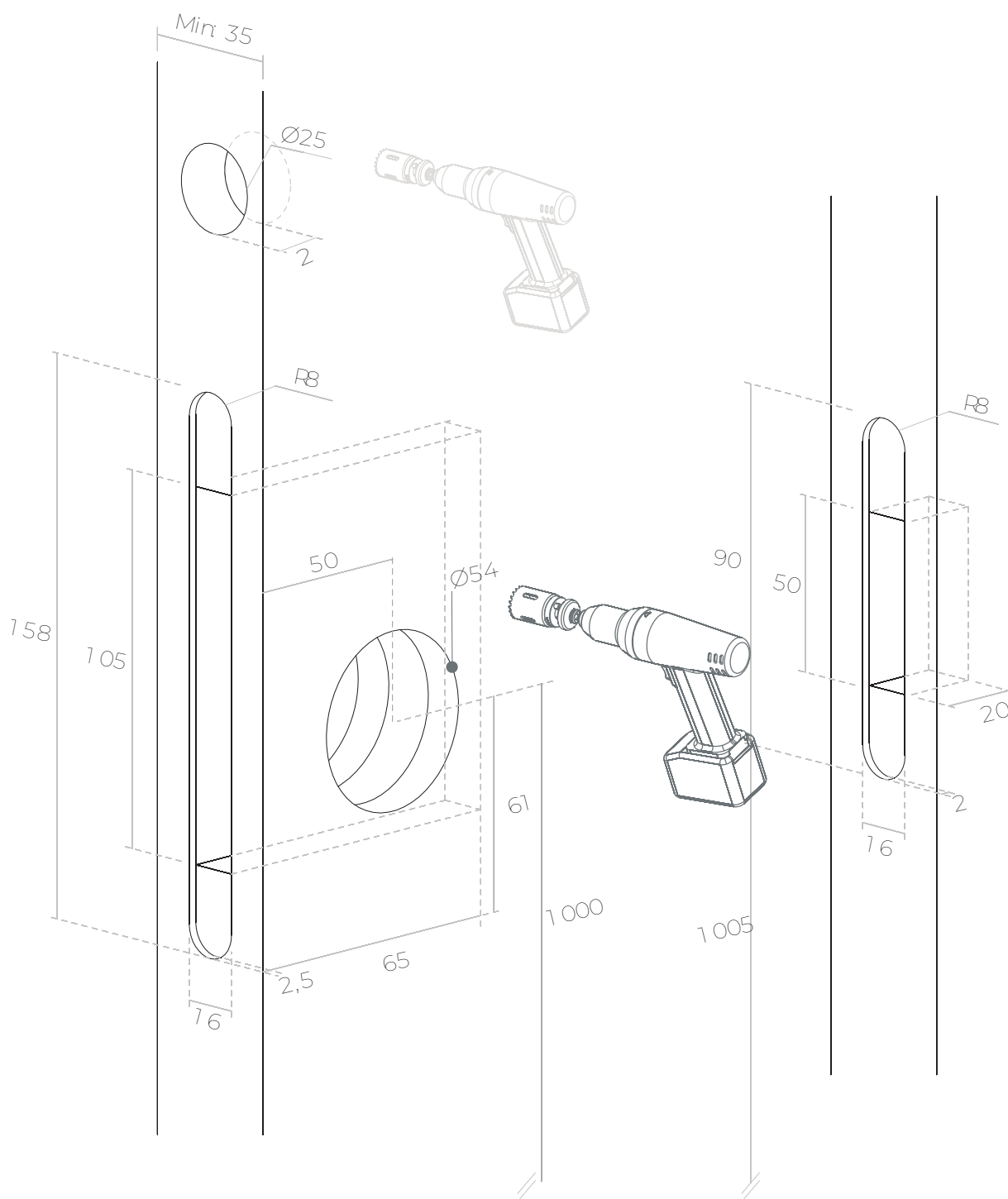
www.zanda.com.au 

VISCA CAVITY SLIDING KITS



Note: Measurements are in mm

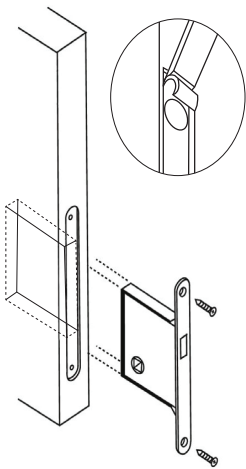
VISCA CAVITY SLIDING KITS



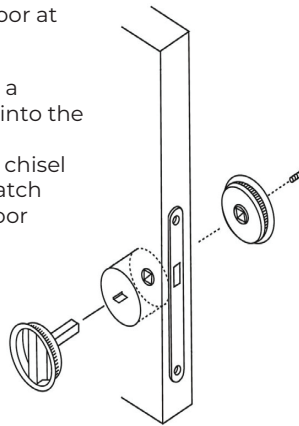
Note: Measurements are in mm

VISCA CAVITY SLIDING KITS

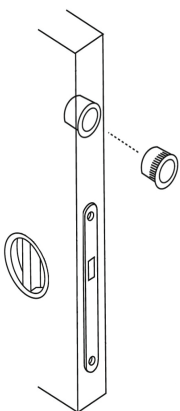
Due to the press fit nature of this hardware, care should be taken when marking the door for mortices.
Please recheck all details prior to drilling.



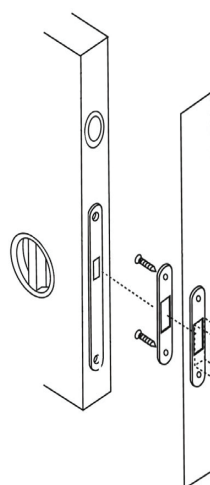
1. Mark the lock position on the door at the desired height.
2. Drill or route the mortice slot to a depth of 70mm. Insert the lock into the mortice and scribe around the faceplate. Remove the lock and chisel out 2mm recess to enable the latch faceplate to sit flush with the door edge.



3. To fit the flush pulls, mark the face of the door each side for drilling a 48mm diameter hole at the required backset and height, to line up with the lock square drive. We recommend using a 48mm hole saw. For clean cut-outs, drill from both sides, meeting in the middle of the door.
4. Shorten the spindle to suit the door width. Clear the holes of any loose saw dust and evenly press fit the flush pulls on either side of the door. Secure the screw to the escape side.



5. To fit the edgepull, mark the position on the door at the required height. Drill a 25mm (1") diameter hole through the door edge to a depth of at least 25mm. We recommend marking the drill at 25mm to achieve this depth.
6. Clear the hole of any loose saw dust and press the edgepull evenly into the hole with the larger inside lip pointing toward the bottom. For a superior fixing of the edgepull, use a construction adhesive when fitting.



7. To fit the keeper, slide the door into closed position and transfer the lock markings to the door jamb. Mark the centre of the lock bolt in retracted position. Centre up the keeper hole with the centre of the bolt. Screw the keeper plate to the door jamb and scribe around the outside. Mark the centre hole for the mortice, remove the plate and mortice the centre hole to a depth of 20mm. Chisel out a 2mm recess to accept the keeper plate.

Note: Ensure the mortice is cut low enough to clear the bolt when it is extended. The bolt extends outwards and downwards.

Note: Measurements are in mm

1 300 926 321

sales@zanda.com.au

www.zanda.com.au