

# TS9205

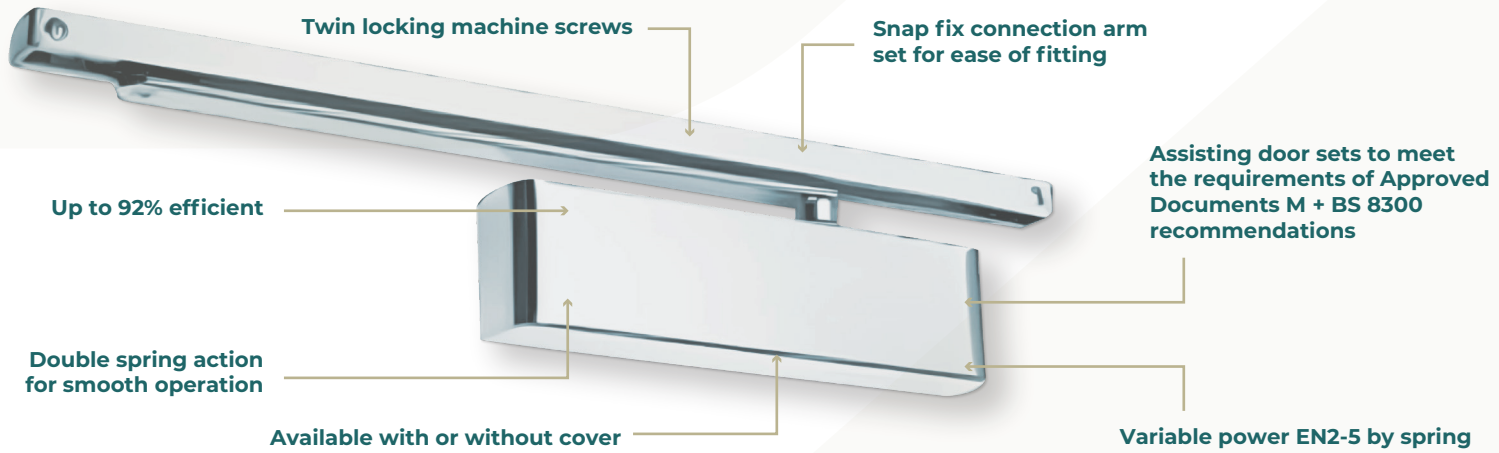
## DOOR CLOSERS



### Features:

- |   |                    |
|---|--------------------|
| • Delayed Action                          | ✓                  |
| • Back Check                              | ✓                  |
| • Hold Open ( <i>not for fire doors</i> ) | ✓                  |
| • Opening Angle                           | 180°               |
| • Pull Side Door Width                    | 390-1250mm         |
| • Push Side Door Width                    | 390-1100mm         |
| • BS8300 Min Door Width                   | 728-835mm          |
| • Max Door Weight                         | <110kg             |
| • Power Adjustment                        | By Spring          |
| • Dimensions (including cover)            | W269 x H69 x D40mm |





## Specification Overview



Fire tested to  
EN1634  
& UL 10C



Max Door Weight  
EN2-5 up to 110kg



Opening Angle  
180°



Max Door Width  
EN2-5 up to 1250mm



Adjustable  
Closing Speed



Adjustable  
Delayed Action



Min Door  
835mm fig1  
728mm fig66



Universal  
Application



Power Size  
EN2-5



Adjustable  
Latch Speed



Adjustable  
Back Check



Guarantee



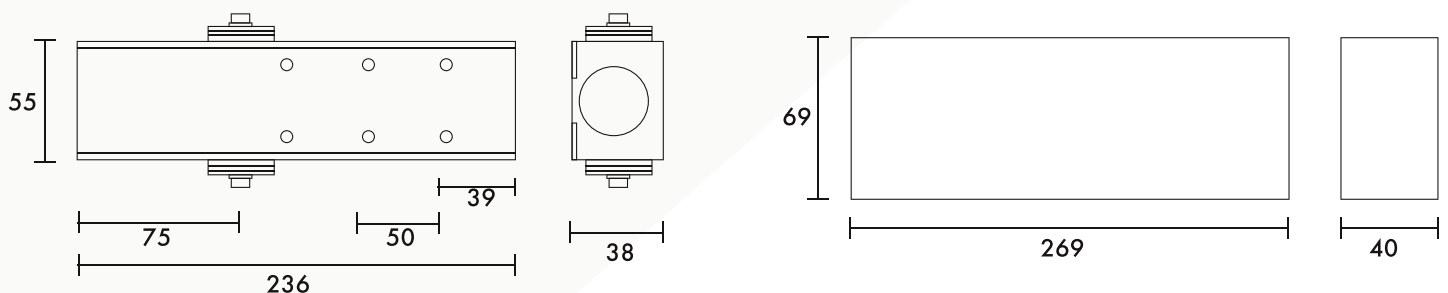
9205DABC-  
CPR2012212



IFCC 1436



Rut Lock



Note: Measurements are in mm



# Technical Information

## BS EN 1154 Classification

TS.9205 door closers have been independently tested to conform with the EN 1154 performance standard. They are CE & UKCA marked and classified as follows:

Standard Arm						Parallel Arm					
4	8	5	1	1	3	4	8	4	1	1	3
		2						2			

The TS.9205 high efficiency door closer is 'Engineered to Perform', assisting door sets meet the requirement of Approved Document M and BS8300 recommendations.

## BS EN 1634 Fire Test

TS.9205 closers have been tested to BS EN 1634 for 30, 60 and 120 minutes on timber doorsets, and 240 minutes on metal doorsets.

## UL Listed

The TS.9205 has been certified and labelled to the Underwriters' Laboratories (UL) testing, inspection, certification, auditing and validation.

## ADA Compliant

Fire doors shall have a minimum opening force allowable by the appropriate administration authority, and doors other than fire doors 5 pounds maximum opening force (22.2N) from push or pull side.

## Certificate number: IFCC 1436

Acceptable doorset types detailed in PAR/18211/01 Rev B to use with the following door assemblies.

## TT Timber Leaf & Timber Frame

May be fitted Standard, Parallel arm or Transom fixing position on previously tested single-acting, latched or un-latched, intumescent sealed timber door and timber frame assemblies.

## IMM & MM Metal Leaf & Metal Frame

May be fitted Standard or Parallel arm fixing position to single-acting steel door assemblies, if required to the fire risk or non-fire-risk face of the leaf of previously tested uninsulating or insulating steel door leaf and frame assemblies.

## Options

- Hold-open arm (Not to be used on fire doors. Not covered by CE)
- Drop plate (Not covered by CE)
- Use Rutland intumescent kit for un-insulated steel doors

## Others Benefits

- BS8300 (Min door width 835mm)
- BS8300 (Min door width 728mm)
- All finishes available



**AVAILABLE STANDARD ARM STOCKED FINISHES:**



Satin Stainless Steel (SSS)



Satin Brass (SB)



Black (BLK)



Satin Nickel Plate (SNP)



Antique Brass (AB)



Polished Nickel Plate (PNP)



Silver (SE)



Electro Brass (PVD)



White (WHT)



Graphite Nickel (GN)



Weathered Bronze (WB)

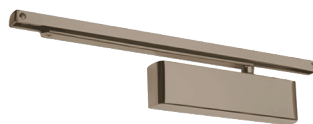


Oil Rubbed Bronze (ORB)

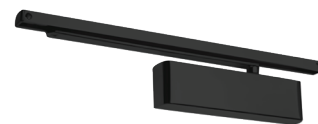
**AVAILABLE SLIDE ARM STOCKED FINISHES:**



Satin Nickel Plate



Graphite Nickel



Matt Black



White



Satin Brass



Polished Chrome



Polished Brass

